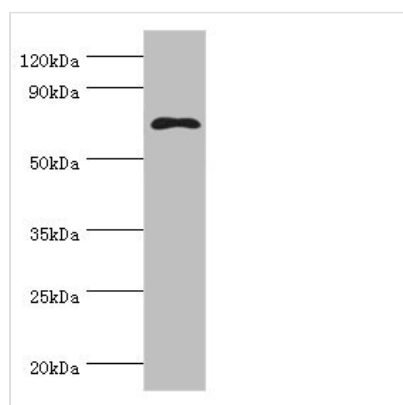




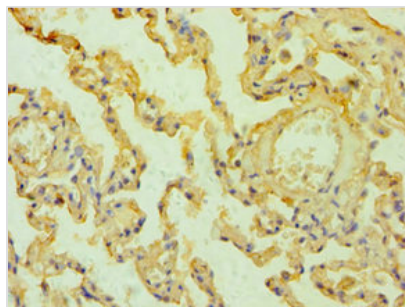
MSLN Antibody

Product Code	CSB-PA015044ESR1HU
Storage	Upon receipt, store at -20°C or -80°C. Avoid repeated freeze.
Uniprot No.	Q13421
Immunogen	Recombinant Human Mesothelin protein (37-296AA)
Raised In	Rabbit
Species Reactivity	Human
Tested Applications	ELISA, WB, IHC; Recommended dilution: WB:1:200-1:1000, IHC:1:20-1:200
Form	Liquid
Conjugate	Non-conjugated
Storage Buffer	PBS with 0.02% sodium azide, 50% glycerol, pH7.3.
Purification Method	Antigen Affinity Purified
Isotype	IgG
Clonality	Polyclonal
Alias	Mesothelin (CAK1 antigen) (Pre-pro-megakaryocyte-potentiating factor) [Cleaved into: Megakaryocyte-potentiating factor (MPF); Mesothelin, cleaved form], MSLN, MPF
Immunogen Species	Homo sapiens (Human)
Research Area	Tags & Cell Markers
Target Names	MSLN

Image



Western blot
 All lanes: MSLN antibody at 8µg/ml + Hela whole cell lysate
 Secondary
 Goat polyclonal to rabbit IgG at 1/10000 dilution
 Predicted band size: 69, 72, 68 kDa
 Observed band size: 69 kDa



Immunohistochemistry of paraffin-embedded human lung tissue using CSB-PA015044ESR1HU at dilution of 1:100

Usage

For Research Use Only. Not for use in diagnostic or therapeutic procedures.