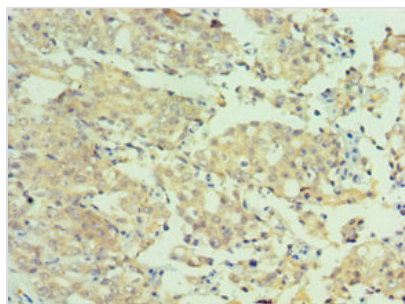




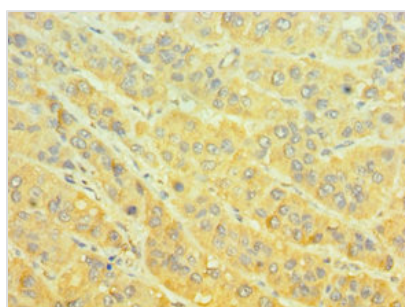
MTMR4 Antibody

| | |
|----------------------------|---|
| Product Code | CSB-PA889148ESR2HU |
| Storage | Upon receipt, store at -20°C or -80°C. Avoid repeated freeze. |
| Uniprot No. | Q9NYA4 |
| Immunogen | Recombinant Human Myotubularin-related protein 4 protein (570-820AA) |
| Raised In | Rabbit |
| Species Reactivity | Human |
| Tested Applications | ELISA, IHC; Recommended dilution: IHC:1:20-1:200 |
| Form | Liquid |
| Conjugate | Non-conjugated |
| Storage Buffer | PBS with 0.02% sodium azide, 50% glycerol, pH7.3. |
| Purification Method | Antigen Affinity Purified |
| Isotype | IgG |
| Clonality | Polyclonal |
| Alias | Myotubularin-related protein 4 (EC 3.1.3.48) (FYVE domain-containing dual specificity protein phosphatase 2) (FYVE-DSP2) (Zinc finger FYVE domain-containing protein 11), MTMR4, KIAA0647 ZFYVE11 |
| Immunogen Species | Homo sapiens (Human) |
| Research Area | Signal Transduction |
| Target Names | MTMR4 |

Image



Immunohistochemistry of paraffin-embedded human colon cancer using CSB-PA889148ESR2HU at dilution of 1:100



Immunohistochemistry of paraffin-embedded human liver cancer using CSB-PA889148ESR2HU at dilution of 1:100



Usage

For Research Use Only. Not for use in diagnostic or therapeutic procedures.