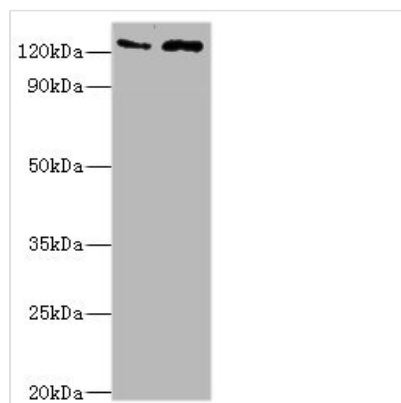




# KDM4B Antibody

<b>Product Code</b>	CSB-PA012138ESR1HU
<b>Storage</b>	Upon receipt, store at -20°C or -80°C. Avoid repeated freeze.
<b>Uniprot No.</b>	O94953
<b>Immunogen</b>	Recombinant Human Lysine-specific demethylase 4B protein (1-260AA)
<b>Raised In</b>	Rabbit
<b>Species Reactivity</b>	Human
<b>Tested Applications</b>	ELISA, WB, IHC; Recommended dilution: WB:1:200-1:1000, IHC:1:20-1:200
<b>Form</b>	Liquid
<b>Conjugate</b>	Non-conjugated
<b>Storage Buffer</b>	PBS with 0.02% sodium azide, 50% glycerol, pH7.3.
<b>Purification Method</b>	Antigen Affinity Purified
<b>Isotype</b>	IgG
<b>Clonality</b>	Polyclonal
<b>Alias</b>	Lysine-specific demethylase 4B (EC 1.14.11.-) (JmjC domain-containing histone demethylation protein 3B) (Jumonji domain-containing protein 2B), KDM4B, JHDM3B JMJD2B KIAA0876
<b>Immunogen Species</b>	Homo sapiens (Human)
<b>Research Area</b>	Epigenetics and Nuclear Signaling
<b>Target Names</b>	KDM4B

## Image



Western blot

All lanes: KDM4B antibody at 4µg/ml

Lane 1: Jurkat whole cell lysate

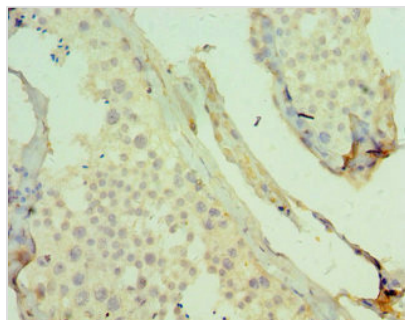
Lane 2: k562 whole cell lysate

Secondary

Goat polyclonal to rabbit IgG at 1/10000 dilution

Predicted band size: 122, 51 kDa

Observed band size: 122 kDa



Immunohistochemistry of paraffin-embedded human testis tissue using CSB-PA012138ESR1HU at dilution of 1:100

---

**Usage**

For Research Use Only. Not for use in diagnostic or therapeutic procedures.