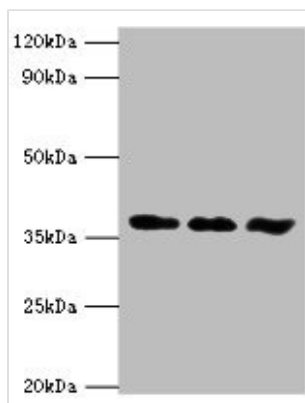




ACVR1 Antibody

Product Code	CSB-PA001257ESR2HU
Storage	Upon receipt, store at -20°C or -80°C. Avoid repeated freeze.
Uniprot No.	Q04771
Immunogen	Recombinant Human Activin receptor type-1 protein (20-125AA)
Raised In	Rabbit
Species Reactivity	Human, Mouse
Tested Applications	ELISA, WB, IHC, IF; Recommended dilution: WB:1:500-1:2000, IHC:1:20-1:200, IF:1:50-1:200
Form	Liquid
Conjugate	Non-conjugated
Storage Buffer	PBS with 0.02% sodium azide, 50% glycerol, pH7.3.
Purification Method	Antigen Affinity Purified
Isotype	IgG
Clonality	Polyclonal
Alias	Activin receptor type-1 (EC 2.7.11.30) (Activin receptor type I) (ACTR-I) (Activin receptor-like kinase 2) (ALK-2) (Serine/threonine-protein kinase receptor R1) (SKR1) (TGF-B superfamily receptor type I) (TSR-I), ACVR1, ACVRLK2
Immunogen Species	Homo sapiens (Human)
Research Area	Signal Transduction
Target Names	ACVR1

Image



Western blot

All lanes: ACVR1 antibody at 6µg/ml

Lane 1: A549 whole cell lysate

Lane 2: HepG2 whole cell lysate

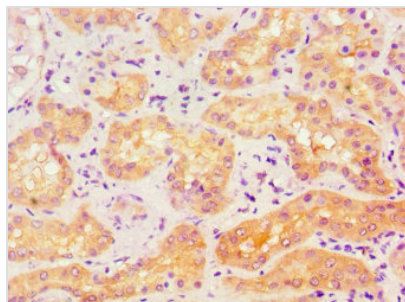
Lane 3: Mouse gonad tissue

Secondary

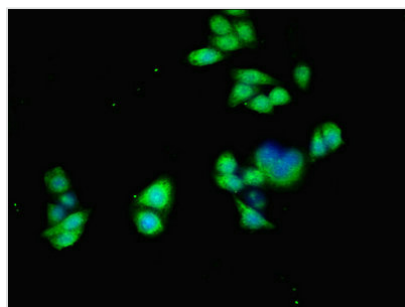
Goat polyclonal to rabbit IgG at 1/10000 dilution

Predicted band size: 39 kDa

Observed band size: 39 kDa



Immunohistochemistry of paraffin-embedded human kidney tissue using CSB-PA001257ESR2HU at dilution of 1:100



Immunofluorescent analysis of PC-3 cells using CSB-PA001257ESR2HU at dilution of 1:100 and Alexa Fluor 488-conjugated AffiniPure Goat Anti-Rabbit IgG(H+L)

Usage

For Research Use Only. Not for use in diagnostic or therapeutic procedures.