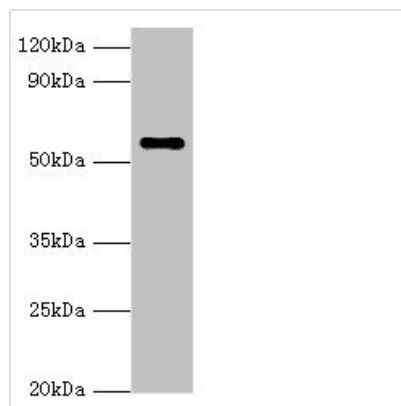




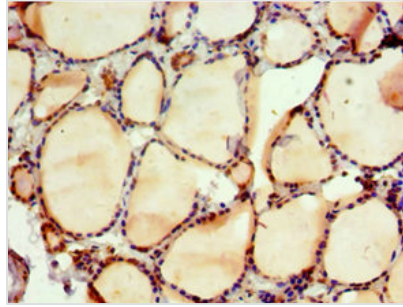
NAB2 Antibody

Product Code	CSB-PA614899ESR2HU
Storage	Upon receipt, store at -20°C or -80°C. Avoid repeated freeze.
Uniprot No.	Q15742
Immunogen	Recombinant Human NGFI-A-binding protein 2 protein (1-200AA)
Raised In	Rabbit
Species Reactivity	Human
Tested Applications	ELISA, WB, IHC; Recommended dilution: WB:1:200-1:1000, IHC:1:20-1:200
Form	Liquid
Conjugate	Non-conjugated
Storage Buffer	PBS with 0.02% sodium azide, 50% glycerol, pH7.3.
Purification Method	Antigen Affinity Purified
Isotype	IgG
Clonality	Polyclonal
Alias	NGFI-A-binding protein 2 (EGR-1-binding protein 2) (Melanoma-associated delayed early response protein) (Protein MADER), NAB2, MADER
Immunogen Species	Homo sapiens (Human)
Research Area	Neuroscience
Target Names	NAB2

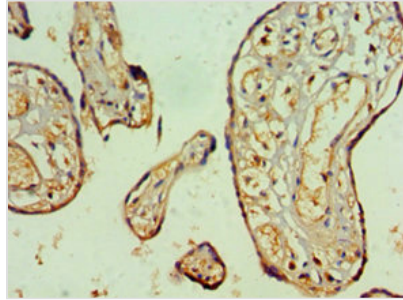
Image



Western blot
 All lanes: NAB2 antibody at 3µg/ml + HeLa whole cell lysate
 Secondary
 Goat polyclonal to rabbit IgG at 1/10000 dilution
 Predicted band size: 57, 35, 50 kDa
 Observed band size: 57 kDa



Immunohistochemistry of paraffin-embedded human thyroid tissue using CSB-PA614899ESR2HU at dilution of 1:100



Immunohistochemistry of paraffin-embedded human placenta tissue using CSB-PA614899ESR2HU at dilution of 1:100

Usage

For Research Use Only. Not for use in diagnostic or therapeutic procedures.