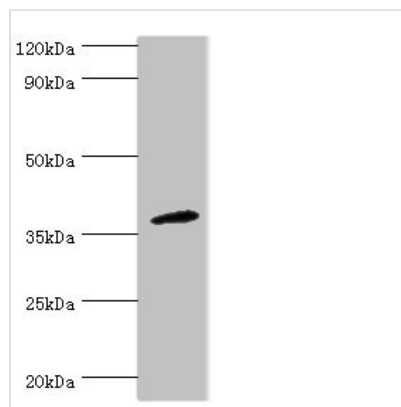




# CD200R1 Antibody

<b>Product Code</b>	CSB-PA851547ESR2HU
<b>Storage</b>	Upon receipt, store at -20°C or -80°C. Avoid repeated freeze.
<b>Uniprot No.</b>	Q8TD46
<b>Immunogen</b>	Recombinant Human Cell surface glycoprotein CD200 receptor 1 protein (226-325AA)
<b>Raised In</b>	Rabbit
<b>Species Reactivity</b>	Human, Mouse
<b>Tested Applications</b>	ELISA, WB; Recommended dilution: WB:1:200-1:1000
<b>Form</b>	Liquid
<b>Conjugate</b>	Non-conjugated
<b>Storage Buffer</b>	PBS with 0.02% sodium azide, 50% glycerol, pH7.3.
<b>Purification Method</b>	Antigen Affinity Purified
<b>Isotype</b>	IgG
<b>Clonality</b>	Polyclonal
<b>Alias</b>	Cell surface glycoprotein CD200 receptor 1 (CD200 cell surface glycoprotein receptor) (Cell surface glycoprotein OX2 receptor 1), CD200R1, CD200R CRTR2 MOX2R OX2R
<b>Immunogen Species</b>	Homo sapiens (Human)
<b>Research Area</b>	Immunology
<b>Target Names</b>	CD200R1

## Image



Western blot  
 All lanes: CD200R1 antibody at 4µg/ml + Mouse lung tissue  
 Secondary  
 Goat polyclonal to rabbit IgG at 1/10000 dilution  
 Predicted band size: 37, 22, 19, 40 kDa  
 Observed band size: 37 kDa

**Usage** For Research Use Only. Not for use in diagnostic or therapeutic procedures.