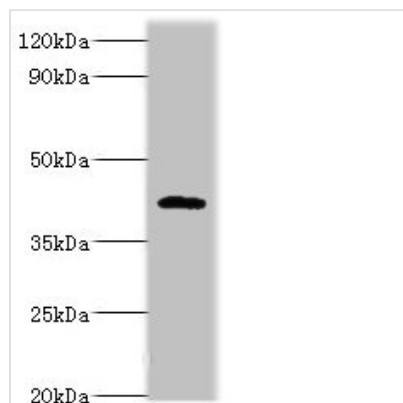




# PARL Antibody

<b>Product Code</b>	CSB-PA880960ESR2HU
<b>Storage</b>	Upon receipt, store at -20°C or -80°C. Avoid repeated freeze.
<b>Uniprot No.</b>	Q9H300
<b>Immunogen</b>	Recombinant Human Presenilins-associated rhomboid-like protein, mitochondrial protein (1-170AA)
<b>Raised In</b>	Rabbit
<b>Species Reactivity</b>	Human
<b>Tested Applications</b>	ELISA, WB, IHC; Recommended dilution: WB:1:500-1:2000, IHC:1:20-1:200
<b>Form</b>	Liquid
<b>Conjugate</b>	Non-conjugated
<b>Storage Buffer</b>	PBS with 0.02% sodium azide, 50% glycerol, pH7.3.
<b>Purification Method</b>	Antigen Affinity Purified
<b>Isotype</b>	IgG
<b>Clonality</b>	Polyclonal
<b>Alias</b>	Presenilins-associated rhomboid-like protein, mitochondrial (EC 3.4.21.105) (Mitochondrial intramembrane cleaving protease PARL) [Cleaved into: P-beta (Pbeta)], PARL, PSARL
<b>Immunogen Species</b>	Homo sapiens (Human)
<b>Research Area</b>	Neuroscience
<b>Target Names</b>	PARL

## Image



Western blot

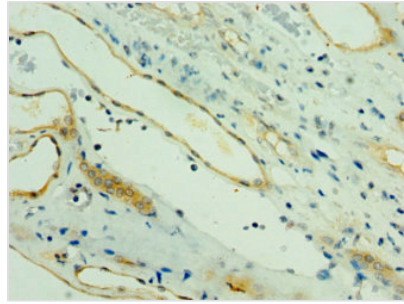
All lanes: PARL antibody at 6µg/ml + NIH/3T3 whole cell lysate

Secondary

Goat polyclonal to rabbit IgG at 1/10000 dilution

Predicted band size: 43, 37 kDa

Observed band size: 47 kDa



Immunohistochemistry of paraffin-embedded human kidney tissue using CSB-PA880960ESR2HU at dilution of 1:100

---

**Usage**

For Research Use Only. Not for use in diagnostic or therapeutic procedures.