



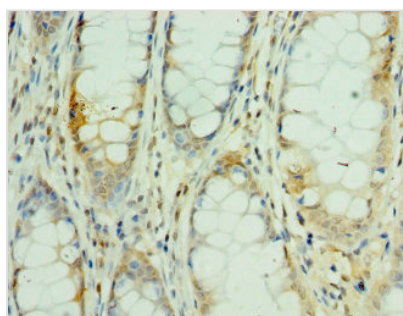
MEF2C Antibody

Product Code	CSB-PA804958ESR1HU
Storage	Upon receipt, store at -20°C or -80°C. Avoid repeated freeze.
Uniprot No.	Q06413
Immunogen	Recombinant Human Myocyte-specific enhancer factor 2C protein (170-380AA)
Raised In	Rabbit
Species Reactivity	Human, Mouse
Tested Applications	ELISA, WB, IHC; Recommended dilution: WB:1:200-1:1000, IHC:1:20-1:200
Form	Liquid
Conjugate	Non-conjugated
Storage Buffer	PBS with 0.02% sodium azide, 50% glycerol, pH7.3.
Purification Method	Antigen Affinity Purified
Isotype	IgG
Clonality	Polyclonal
Alias	Myocyte-specific enhancer factor 2C (Myocyte enhancer factor 2C), MEF2C
Immunogen Species	Homo sapiens (Human)
Research Area	Signal Transduction
Target Names	MEF2C

Image



Western blot
 All lanes: MEF2C antibody at 1µg/ml + Mouse skeletal muscle tissue
 Secondary
 Goat polyclonal to rabbit IgG at 1/10000 dilution
 Predicted band size: 52, 51, 48, 45, 53 kDa
 Observed band size: 52 kDa



Immunohistochemistry of paraffin-embedded human colon cancer using CSB-PA804958ESR1HU at dilution of 1:100



Usage

For Research Use Only. Not for use in diagnostic or therapeutic procedures.