



CARD9 Antibody

Product Code	CSB-PA867133ESR1HU
Storage	Upon receipt, store at -20°C or -80°C. Avoid repeated freeze.
Uniprot No.	Q9H257
Immunogen	Recombinant Human Caspase recruitment domain-containing protein 9 protein (237-536AA)
Raised In	Rabbit
Species Reactivity	Human
Tested Applications	ELISA, WB, IHC; Recommended dilution: WB:1:500-1:2000, IHC:1:20-1:200
Form	Liquid
Conjugate	Non-conjugated
Storage Buffer	PBS with 0.02% sodium azide, 50% glycerol, pH7.3.
Purification Method	Antigen Affinity Purified
Isotype	IgG
Clonality	Polyclonal
Alias	Caspase recruitment domain-containing protein 9 (hCARD9), CARD9
Immunogen Species	Homo sapiens (Human)
Research Area	Cell Biology
Target Names	CARD9

Image



Western blot

All lanes: CARD9 antibody at 15µg/ml

Lane 1: THP-1 whole cell lysate

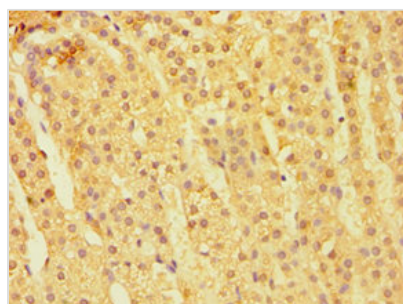
Lane 2: Jurkat whole cell lysate

Secondary

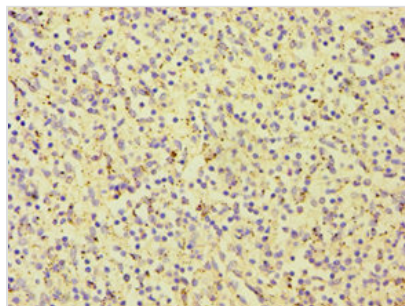
Goat polyclonal to rabbit IgG at 1/10000 dilution

Predicted band size: 63, 57, 43 kDa

Observed band size: 63 kDa



Immunohistochemistry of paraffin-embedded human adrenal gland tissue using CSB-PA867133ESR1HU at dilution of 1:100



Immunohistochemistry of paraffin-embedded human spleen tissue using CSB-PA867133ESR1HU at dilution of 1:100