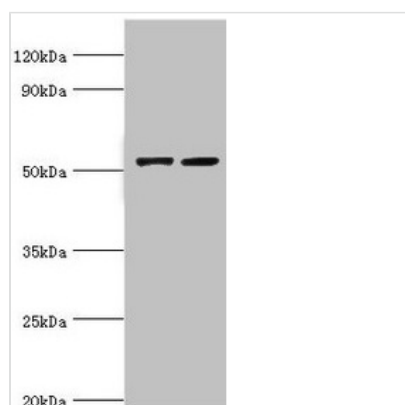




CBLC Antibody

Product Code	CSB-PA892346ESR2HU
Storage	Upon receipt, store at -20°C or -80°C. Avoid repeated freeze.
Uniprot No.	Q9ULV8
Immunogen	Recombinant Human E3 ubiquitin-protein ligase CBL-C protein (245-474AA)
Raised In	Rabbit
Species Reactivity	Human
Tested Applications	ELISA, WB, IHC; Recommended dilution: WB:1:500-1:2000, IHC:1:20-1:200
Form	Liquid
Conjugate	Non-conjugated
Storage Buffer	PBS with 0.02% sodium azide, 50% glycerol, pH7.3.
Purification Method	Antigen Affinity Purified
Isotype	IgG
Clonality	Polyclonal
Alias	E3 ubiquitin-protein ligase CBL-C (EC 2.3.2.27) (RING finger protein 57) (RING-type E3 ubiquitin transferase CBL-C) (SH3-binding protein CBL-3) (SH3-binding protein CBL-C) (Signal transduction protein CBL-C), CBLC, CBL3 RNF57
Immunogen Species	Homo sapiens (Human)
Research Area	Epigenetics and Nuclear Signaling
Target Names	CBLC

Image



Western blot

All lanes: CBLC antibody at 14µg/ml

Lane 1: A549 whole cell lysate

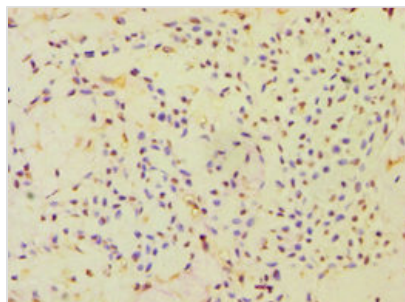
Lane 2: HeLa whole cell lysate

Secondary

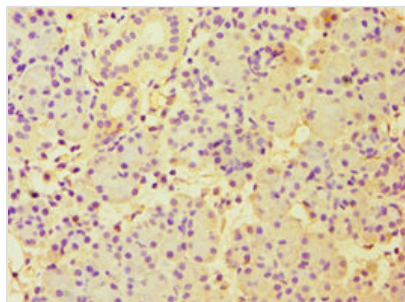
Goat polyclonal to rabbit IgG at 1/10000 dilution

Predicted band size: 53, 48 kDa

Observed band size: 53 kDa



Immunohistochemistry of paraffin-embedded human breast cancer using CSB-PA892346ESR2HU at dilution of 1:100



Immunohistochemistry of paraffin-embedded human pancreatic tissue using CSB-PA892346ESR2HU at dilution of 1:100

Usage

For Research Use Only. Not for use in diagnostic or therapeutic procedures.