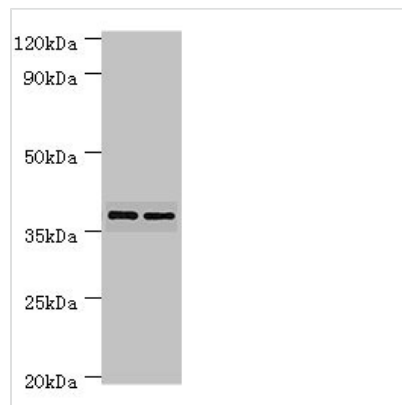




# MAP2K3 Antibody

<b>Product Code</b>	CSB-PA013412ESR2HU
<b>Storage</b>	Upon receipt, store at -20°C or -80°C. Avoid repeated freeze.
<b>Uniprot No.</b>	P46734
<b>Immunogen</b>	Recombinant Human Dual specificity mitogen-activated protein kinase kinase 3 protein (1-170AA)
<b>Raised In</b>	Rabbit
<b>Species Reactivity</b>	Human
<b>Tested Applications</b>	ELISA, WB, IHC; Recommended dilution: WB:1:500-1:2000, IHC:1:20-1:200
<b>Form</b>	Liquid
<b>Conjugate</b>	Non-conjugated
<b>Storage Buffer</b>	PBS with 0.02% sodium azide, 50% glycerol, pH7.3.
<b>Purification Method</b>	Antigen Affinity Purified
<b>Isotype</b>	IgG
<b>Clonality</b>	Polyclonal
<b>Alias</b>	Dual specificity mitogen-activated protein kinase kinase 3 (MAP kinase kinase 3) (MAPKK 3) (EC 2.7.12.2) (MAPK/ERK kinase 3) (MEK 3) (Stress-activated protein kinase kinase 2) (SAPK kinase 2) (SAPKK-2) (SAPKK2), MAP2K3, MEK3 MKK3 PRKMK3 SKK2
<b>Immunogen Species</b>	Homo sapiens (Human)
<b>Research Area</b>	Signal Transduction
<b>Target Names</b>	MAP2K3

## Image



### Western blot

All lanes: MAP2K3 antibody at 7µg/ml

Lane 1: MCF-7 whole cell lysate

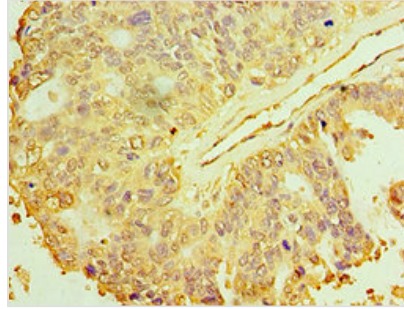
Lane 2: COLO320 whole cell lysate

Secondary

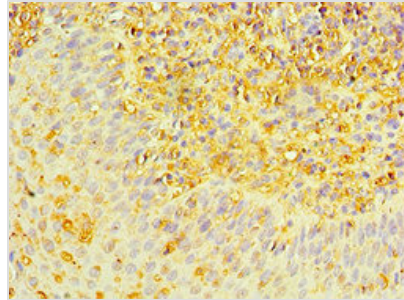
Goat polyclonal to rabbit IgG at 1/10000 dilution

Predicted band size: 40, 37 kDa

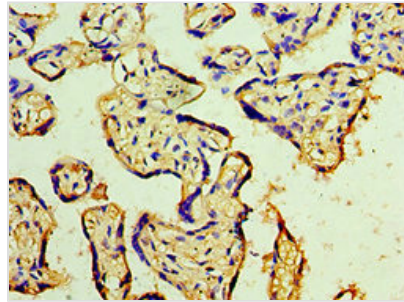
Observed band size: 40 kDa



Immunohistochemistry of paraffin-embedded human endometrial cancer using CSB-PA013412ESR2HU at dilution of 1:100



Immunohistochemistry of paraffin-embedded human tonsil tissue using CSB-PA013412ESR2HU at dilution of 1:100



Immunohistochemistry of paraffin-embedded human placenta tissue using CSB-PA013412ESR2HU at dilution of 1:100

**Usage**

For Research Use Only. Not for use in diagnostic or therapeutic procedures.