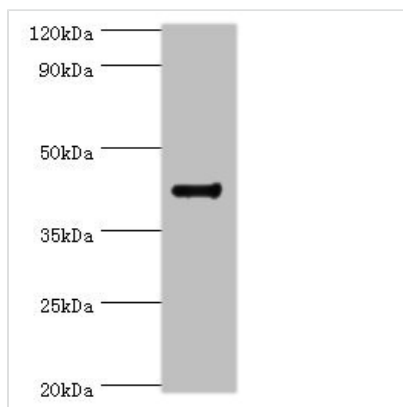




RGS20 Antibody

Product Code	CSB-PA019652ESR1HU
Storage	Upon receipt, store at -20°C or -80°C. Avoid repeated freeze.
Uniprot No.	O76081
Immunogen	Recombinant Human Regulator of G-protein signaling 20 protein (1-241AA)
Raised In	Rabbit
Species Reactivity	Human, Mouse
Tested Applications	ELISA, WB, IHC, IF; Recommended dilution: WB:1:200-1:1000, IHC:1:20-1:200, IF:1:50-1:200
Form	Liquid
Conjugate	Non-conjugated
Storage Buffer	PBS with 0.02% sodium azide, 50% glycerol, pH7.3.
Purification Method	Antigen Affinity Purified
Isotype	IgG
Clonality	Polyclonal
Alias	Regulator of G-protein signaling 20 (RGS20) (Gz-selective GTPase-activating protein) (G(z)GAP) (Gz-GAP) (Regulator of G-protein signaling Z1) (Regulator of Gz-selective protein signaling 1), RGS20, RGSZ1 ZGAP1
Immunogen Species	Homo sapiens (Human)
Research Area	Signal Transduction
Target Names	RGS20

Image



Western blot

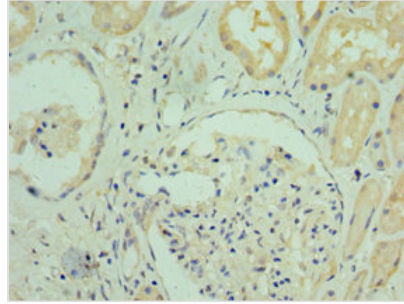
All lanes: RGS20 antibody at 8µg/ml + Mouse brain tissue

Secondary

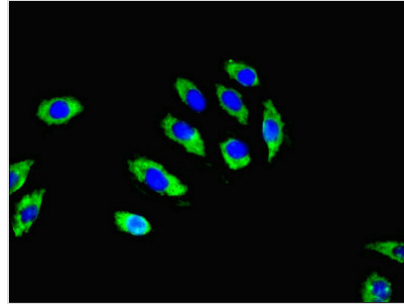
Goat polyclonal to rabbit IgG at 1/10000 dilution

Predicted band size: 44, 32, 22, 18, 26, 28 kDa

Observed band size: 44 kDa



Immunohistochemistry of paraffin-embedded human kidney tissue using CSB-PA019652ESR1HU at dilution of 1:100



Immunofluorescent analysis of A549 cells using CSB-PA019652ESR1HU at dilution of 1:100 and Alexa Fluor 488-conjugated AffiniPure Goat Anti-Rabbit IgG(H+L)

Usage

For Research Use Only. Not for use in diagnostic or therapeutic procedures.