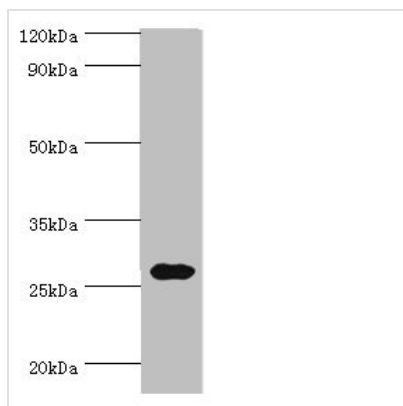




CRISP2 Antibody

Product Code	CSB-PA005975ESR1HU
Storage	Upon receipt, store at -20°C or -80°C. Avoid repeated freeze.
Uniprot No.	P16562
Immunogen	Recombinant Human Cysteine-rich secretory protein 2 protein (22-243AA)
Raised In	Rabbit
Species Reactivity	Human, Rat
Tested Applications	ELISA, WB, IHC; Recommended dilution: WB:1:200-1:1000, IHC:1:20-1:200
Form	Liquid
Conjugate	Non-conjugated
Storage Buffer	PBS with 0.02% sodium azide, 50% glycerol, pH7.3.
Purification Method	Antigen Affinity Purified
Isotype	IgG
Clonality	Polyclonal
Alias	Cysteine-rich secretory protein 2 (CRISP-2) (Cancer/testis antigen 36) (CT36) (Testis-specific protein TPX-1), CRISP2, GAPDL5 TPX1
Immunogen Species	Homo sapiens (Human)
Research Area	Developmental Biology
Target Names	CRISP2

Image



Western blot

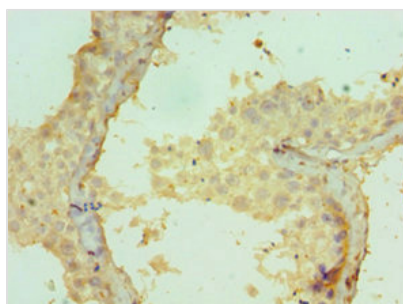
All lanes: CRISP2 antibody at 12µg/ml + Rat gonad tissue

Secondary

Goat polyclonal to rabbit IgG at 1/10000 dilution

Predicted band size: 28, 32 kDa

Observed band size: 28 kDa



Immunohistochemistry of paraffin-embedded human testis tissue using CSB-

PA005975ESR1HU at dilution of 1:100



Usage

For Research Use Only. Not for use in diagnostic or therapeutic procedures.