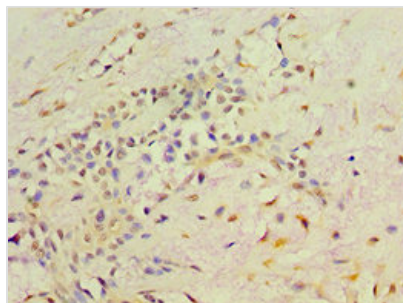




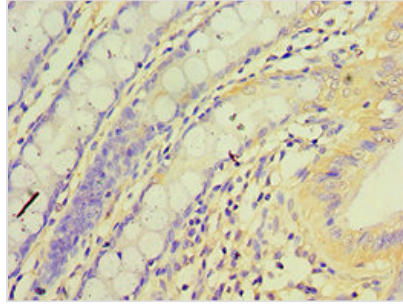
RET Antibody

Product Code	CSB-PA019572DSR2HU
Storage	Upon receipt, store at -20°C or -80°C. Avoid repeated freeze.
Uniprot No.	P07949
Immunogen	Recombinant Human Proto-oncogene tyrosine-protein kinase receptor Ret protein (29-300AA)
Raised In	Rabbit
Species Reactivity	Human
Tested Applications	ELISA, IHC; Recommended dilution: IHC:1:20-1:200
Form	Liquid
Conjugate	Non-conjugated
Storage Buffer	PBS with 0.02% sodium azide, 50% glycerol, pH7.3.
Purification Method	Antigen Affinity Purified
Isotype	IgG
Clonality	Polyclonal
Alias	Proto-oncogene tyrosine-protein kinase receptor Ret (EC 2.7.10.1) (Cadherin family member 12) (Proto-oncogene c-Ret) [Cleaved into: Soluble RET kinase fragment; Extracellular cell-membrane anchored RET cadherin 120 kDa fragment], RET, CDHF12 CDHR16 PTC RET51
Immunogen Species	Homo sapiens (Human)
Research Area	Signal Transduction
Target Names	RET

Image



Immunohistochemistry of paraffin-embedded human breast cancer using CSB-PA019572DSR2HU at dilution of 1:100



Immunohistochemistry of paraffin-embedded human colon tissue using CSB-PA019572DSR2HU at dilution of 1:100

Usage

For Research Use Only. Not for use in diagnostic or therapeutic procedures.