



Recombinant Mouse Kelch-like ECH-associated protein 1 (Keap1)

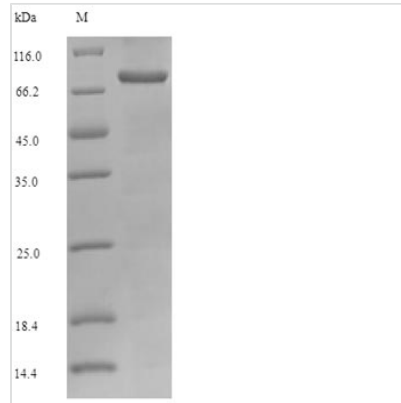
| | |
|--------------------------|---|
| Product Code | CSB-EP012147MO |
| Relevance | Acts as a substrate adapter protein for the E3 ubiquitin ligase complex formed by CUL3 and RBX1 and targets NFE2L2/NRF2 for ubiquitination and degradation by the proteasome, thus resulting in the suppression of its transcriptional activity and the repression of antioxidant response element-mediated detoxifying enzyme gene expression. Retains NFE2L2/NRF2 and may also retain BPTF in the cytosol. Targets PGAM5 for ubiquitination and degradation by the proteasome |
| Abbreviation | Recombinant Mouse Keap1 protein |
| Storage | The shelf life is related to many factors, storage state, buffer ingredients, storage temperature and the stability of the protein itself. Generally, the shelf life of liquid form is 6 months at -20°C/-80°C. The shelf life of lyophilized form is 12 months at -20°C/-80°C. |
| Uniprot No. | Q9Z2X8 |
| Alias | Cytosolic inhibitor of Nrf2 Short name: INrf2 |
| Product Type | Recombinant Protein |
| Immunogen Species | Mus musculus (Mouse) |
| Purity | ≥ 90% as determined by SDS-PAGE. |
| Sequence | <p>MQPEPKLSGAPRSSQFLPLWSKCEGAGDAVMYASTECKAEVTPSQDGNRT FSYTLEDHTKQAFGVMNELRLSQQLCDVTLQVKYEDIPAAQFMAHKVVLASS PVFKAMFTNGLREQGMEVVSIEGIHPKVMERLIEFAYTASISVGEKCVLHVMNG AVMYQIDSVVRACSDFLVQQLDPSNAIGIANFAEQIGCTELHQRAREYIYMHFG EVAKQEEFFNLSHCQLATLISRDDLNVRCSEVFHACIDWVKYDCPQRRFYVQ ALLRAVRCHALTPRFLQTLQKCEILQADARCKDYLVQIFQELTLHKPTQAVPC RAPKVGRLIYTAGGYFRQSLSYLEAYNPSNGSWLRLADLQVPRSGLAGCVVG GLLYAVGGRNNSPDGNTDSSALDCYNPMTNQWSPCASMSVPRNRIGVGVIG GHIYAVGGSHGCIHHSSVERYEPERDEWHLVAPMLTRRIGVGVAVLNRLLYAV GGFDTNRLNSAECYPERNEWRMITPMTIRSGAGVCVLHNCIYAAGGYDG QDQLNSVERYDVETETWTFVAPMRHRSALGITVHQGKIYVLGGYDGHTFLD SVECYDPDSDTWSEVTRMTSGRSGVGVAVTMEPCRKQIDQQNCTC</p> |
| Research Area | Epigenetics and Nuclear Signaling |
| Source | E.coli |
| Target Names | Keap1 |
| Expression Region | 1-624aa |
| Notes | Repeated freezing and thawing is not recommended. Store working aliquots at 4°C for up to one week. |
| Tag Info | N-terminal 6xHis-SUMO-tagged |



Mol. Weight 85.6kDa

Protein Length Full Length

Image



(Tris-Glycine gel) Discontinuous SDS-PAGE (reduced) with 5% enrichment gel and 15% separation gel.

Reconstitution

We recommend that this vial be briefly centrifuged prior to opening to bring the contents to the bottom. Please reconstitute protein in deionized sterile water to a concentration of 0.1-1.0 mg/mL. We recommend to add 5-50% of glycerol (final concentration) and aliquot for long-term storage at -20°C/-80°C. Our default final concentration of glycerol is 50%. Customers could use it as reference.

Shelf Life

The shelf life is related to many factors, storage state, buffer ingredients, storage temperature and the stability of the protein itself. Generally, the shelf life of liquid form is 6 months at -20°C/-80°C. The shelf life of lyophilized form is 12 months at -20°C/-80°C.