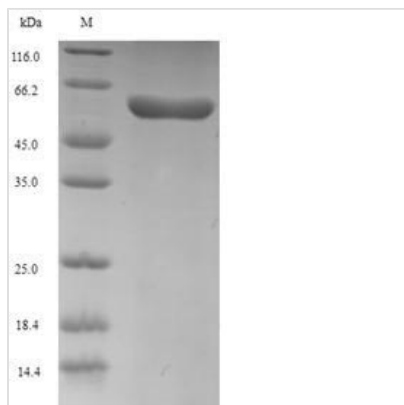


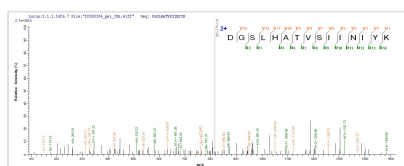


Recombinant Human Procollagen C-endopeptidase enhancer 2 (PCOLCE2)

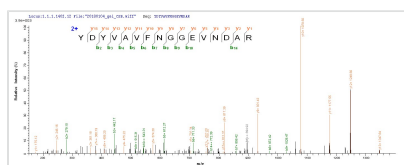
Product Code	CSB-EP017632HU
Relevance	Binds to the C-terminal propeptide of types I and II procollagens and may enhance the cleavage of that propeptide by BMP1.
Abbreviation	Recombinant Human PCOLCE2 protein
Storage	The shelf life is related to many factors, storage state, buffer ingredients, storage temperature and the stability of the protein itself. Generally, the shelf life of liquid form is 6 months at -20°C/-80°C. The shelf life of lyophilized form is 12 months at -20°C/-80°C.
Uniprot No.	Q9UKZ9
Alias	Procollagen COOH-terminal proteinase enhancer 2 Short name: PCPE-2 Short name: Procollagen C-proteinase enhancer 2
Product Type	Recombinant Protein
Immunogen Species	Homo sapiens (Human)
Purity	≥ 90% as determined by SDS-PAGE.
Sequence	QSPERPVFVTCGGILTGESGFIGSEGFPGVYPPNSKCTWKITVPEGKVVVLNFR FIDLESDNLCRYDFVDVYNGHANGQRIGRFCGTFRPGALVSSGNKMMVQMIS DANTAGNGFMAMFSAAPNERGDQYCGGLLDRPSGSFKTPNWPDRDYPAG VTCVWHIVAPKNQLIELKFEKFDVERDNYCRYDYVAVFNGGEVNDARRIGKYC GDSPPAPIVSEARNELLIQFLSDLSLTADGFIGHYIFRPKKLPPTTEQPVTTFPVT TGLKPTVALCQQKCRRTGTLEGNYCSSDFVLAGTVITTITRDGSLHATVSIINIY KEGNLAIQQAGKNMSARLTVVCKQCPLLRRGLNYIIMGQVGEDGRGKIMPNSF IMMFKTKNQKLLDALKNKQC
Research Area	Cell Biology
Source	E.coli
Target Names	PCOLCE2
Expression Region	24-415aa
Notes	Repeated freezing and thawing is not recommended. Store working aliquots at 4°C for up to one week.
Tag Info	N-terminal 6xHis-SUMO-tagged
Mol. Weight	59.3kDa
Protein Length	Full Length of Mature Protein
Image	



(Tris-Glycine gel) Discontinuous SDS-PAGE (reduced) with 5% enrichment gel and 15% separation gel.



Based on the SEQUEST from database of E.coli host and target protein, the LC-MS/MS Analysis result of CSB-EP017632HU could indicate that this peptide derived from E.coli-expressed Homo sapiens (Human) PCOLCE2.



Based on the SEQUEST from database of E.coli host and target protein, the LC-MS/MS Analysis result of CSB-EP017632HU could indicate that this peptide derived from E.coli-expressed Homo sapiens (Human) PCOLCE2.

Reconstitution

We recommend that this vial be briefly centrifuged prior to opening to bring the contents to the bottom. Please reconstitute protein in deionized sterile water to a concentration of 0.1-1.0 mg/mL. We recommend to add 5-50% of glycerol (final concentration) and aliquot for long-term storage at -20°C/-80°C. Our default final concentration of glycerol is 50%. Customers could use it as reference.

Shelf Life

The shelf life is related to many factors, storage state, buffer ingredients, storage temperature and the stability of the protein itself.

Generally, the shelf life of liquid form is 6 months at -20°C/-80°C. The shelf life of lyophilized form is 12 months at -20°C/-80°C.