

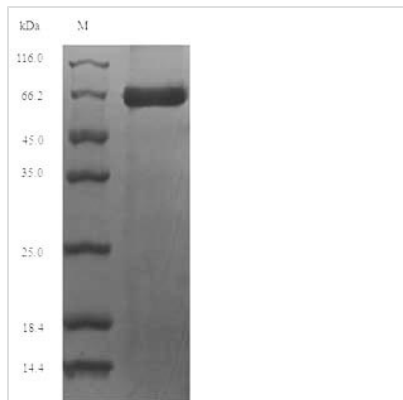


Recombinant Mouse Perforin-1 (Prf1)

Product Code	CSB-EP018668MO
Relevance	Plays a key role in secretory granule-dependent cell death, and in defense against virus-infected or neoplastic cells. Plays an important role in killing other cells that are recognized as non-self by the immune system, e.g. in transplant rejection or some forms of autoimmune disease. Can insert into the membrane of target cells in its calcium-bound form, oligomerize and form large pores. Promotes cytolysis and apoptosis of target cells by facilitating the uptake of cytotoxic granzymes.
Abbreviation	Recombinant Mouse Prf1 protein
Storage	The shelf life is related to many factors, storage state, buffer ingredients, storage temperature and the stability of the protein itself. Generally, the shelf life of liquid form is 6 months at -20°C/-80°C. The shelf life of lyophilized form is 12 months at -20°C/-80°C.
Uniprot No.	P10820
Alias	Short name: P1 Alternative name(s): Cytolysin Lymphocyte pore-forming protein
Product Type	Recombinant Protein
Immunogen Species	Mus musculus (Mouse)
Purity	Greater than 85% as determined by SDS-PAGE.
Sequence	PCYTATRSECKQKHKFVPGVWMAGEGMDVTTLLRRSGSFVNTQRFLRPDRT CTLCKNSLMRDATQRLPVAITHWRPHSSHQQRNVAAAKVHSTEGVAREAAAN INNDWRVGLDVNPRPEANMRASVAGSHSKVANFAAEKTYQDQYNFNSDTVE CRMYSFRLVQKPPLHLDFKKALRALPRNFNSSTEHAYHRLISSYGTHFITAVDL GGRISVLTALRTCQLTLNGLTADEVGDCLNVEAQVSIQAQASVSSEYKACEEK KKQHKMATSFHQTYRERHVEVLGGPLDSTHDLLFGNQATPEQFSTWTASLPS NPGLVDYSLEPLHTLLEEQNPKREALRQAISHYIMSRARWQNC SRPCRSGQH KSSHDSCQCECQDSKVTNQDCCPRQRGLAHLVVS NFRAEHLWGDYTTATDA YLKVFFGGQEFRTGVVWNNNNPRWTDKMDFENVLLSTGGPLRVQVWDADY GWDDDLLGSCDRSPHSGFHEVTCELNHGRVKFSYHAKCLPHLTGGTCL EYAP QLLGDPPGNRSGAVW
Research Area	Immunology
Source	E.coli
Target Names	Prf1
Protein Names	Cytolysin Lymphocyte pore-forming protein Short name: PFP
Expression Region	21-554aa
Notes	Repeated freezing and thawing is not recommended. Store working aliquots at 4°C for up to one week.
Tag Info	N-terminal 6xHis-tagged
Mol. Weight	63.9 kDa

**Protein Length**

Full Length of Mature Protein

Image

(Tris-Glycine gel) Discontinuous SDS-PAGE (reduced) with 5% enrichment gel and 15% separation gel.

Reconstitution

We recommend that this vial be briefly centrifuged prior to opening to bring the contents to the bottom. Please reconstitute protein in deionized sterile water to a concentration of 0.1-1.0 mg/mL. We recommend to add 5-50% of glycerol (final concentration) and aliquot for long-term storage at -20°C/-80°C. Our default final concentration of glycerol is 50%. Customers could use it as reference.

Shelf Life

The shelf life is related to many factors, storage state, buffer ingredients, storage temperature and the stability of the protein itself. Generally, the shelf life of liquid form is 6 months at -20°C/-80°C. The shelf life of lyophilized form is 12 months at -20°C/-80°C.