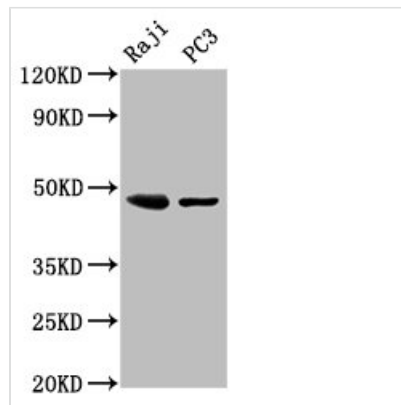




STRADB Antibody

Product Code	CSB-PA874868EA01HU
Storage	Upon receipt, store at -20°C or -80°C. Avoid repeated freeze.
Uniprot No.	Q9C0K7
Immunogen	Recombinant Human STE20-related kinase adapter protein beta protein (212-418AA)
Raised In	Rabbit
Species Reactivity	Human
Tested Applications	ELISA, WB, IHC; Recommended dilution: WB:1:500-1:5000, IHC:1:50-1:500
Form	Liquid
Conjugate	Non-conjugated
Storage Buffer	Preservative: 0.03% Proclin 300 Constituents: 50% Glycerol, 0.01M PBS, PH 7.4
Purification Method	>95%, Protein G purified
Isotype	IgG
Clonality	Polyclonal
Alias	STE20-related kinase adapter protein beta (STRAD beta) (Amyotrophic lateral sclerosis 2 chromosomal region candidate gene 2 protein) (CAL5-21) (ILP-interacting protein) (Pseudokinase ALS2CR2), STRADB, ALS2CR2 ILPIP
Immunogen Species	Homo sapiens (Human)
Research Area	Neuroscience
Target Names	STRADB

Image



Western Blot

Positive WB detected in: Raji whole cell lysate, PC-3 whole cell lysate

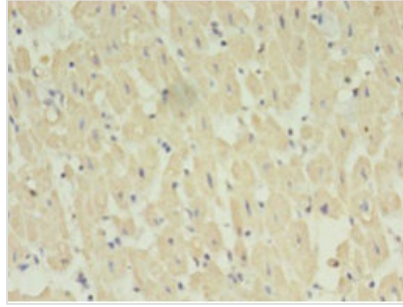
All lanes: STRADB antibody at 3µg/ml

Secondary

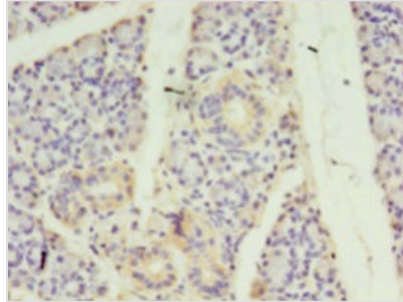
Goat polyclonal to rabbit IgG at 1/50000 dilution

Predicted band size: 48, 43, 32 kDa

Observed band size: 48 kDa



Immunohistochemistry of paraffin-embedded human heart tissue using CSB-PA874868EA01HU at dilution of 1:100



Immunohistochemistry of paraffin-embedded human pancreatic tissue using CSB-PA874868EA01HU at dilution of 1:100

Usage

For Research Use Only. Not for use in diagnostic or therapeutic procedures.