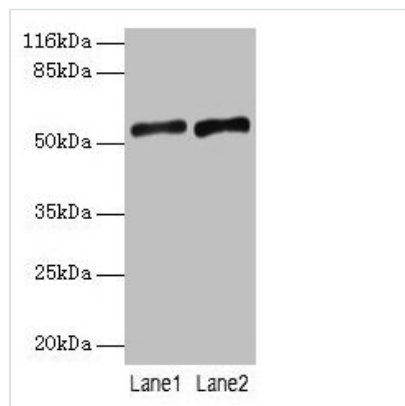




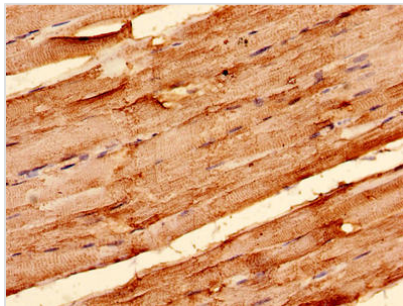
SLC2A4 Antibody

Product Code	CSB-PA021557EA01HU
Storage	Upon receipt, store at -20°C or -80°C. Avoid repeated freeze.
Uniprot No.	P14672
Immunogen	Recombinant Human Solute carrier family 2, facilitated glucose transporter member 4 protein (223-287AA)
Raised In	Rabbit
Species Reactivity	Human, Mouse
Tested Applications	ELISA, WB, IHC, IF; Recommended dilution: WB:1:500-1:5000, IHC:1:20-1:200, IF:1:50-1:200
Form	Liquid
Conjugate	Non-conjugated
Storage Buffer	Preservative: 0.03% Proclin 300 Constituents: 50% Glycerol, 0.01M PBS, PH 7.4
Purification Method	>95%, Protein G purified
Isotype	IgG
Clonality	Polyclonal
Alias	Solute carrier family 2, facilitated glucose transporter member 4 (Glucose transporter type 4, insulin-responsive) (GLUT-4), SLC2A4, GLUT4
Immunogen Species	Homo sapiens (Human)
Research Area	Signal Transduction
Target Names	SLC2A4

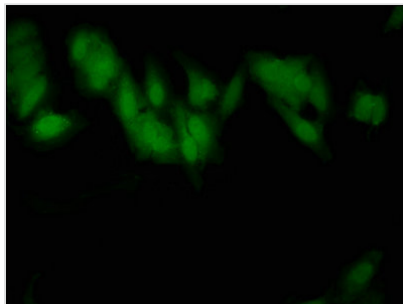
Image



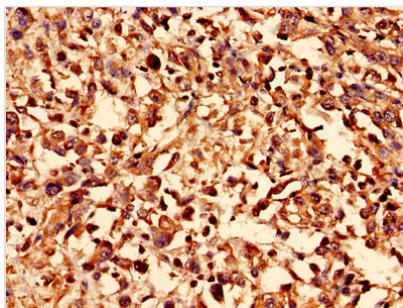
Western blot
All lanes: SLC2A4 antibody at 2µg/ml
Lane 1: Mouse heart tissue
Lane 2: Hela whole cell lysate
Secondary
Goat polyclonal to rabbit IgG at 1/10000 dilution
Predicted band size: 55, 44 kDa
Observed band size: 55 kDa



Immunohistochemistry analysis of human skeletal muscle tissue using CSB-PA021557EA01HU at dilution of 1:100



Immunofluorescent analysis of Hela cells using CSB-PA021557EA01HU at dilution of 1:100 and Alexa Fluor 488-conjugated AffiniPure Goat Anti-Rabbit IgG(H+L)



Immunohistochemistry analysis of human melanoma using CSB-PA021557EA01HU at dilution of 1:100