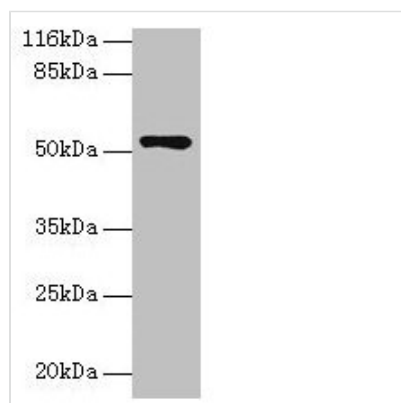




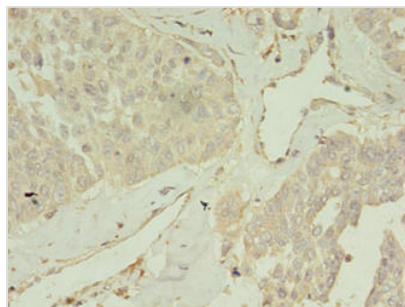
# CCDC14 Antibody

<b>Product Code</b>	CSB-PA672101EA01HU
<b>Storage</b>	Upon receipt, store at -20°C or -80°C. Avoid repeated freeze.
<b>Uniprot No.</b>	Q49A88
<b>Immunogen</b>	Recombinant Human Coiled-coil domain-containing protein 14 protein (159-440AA)
<b>Raised In</b>	Rabbit
<b>Species Reactivity</b>	Human
<b>Tested Applications</b>	ELISA, WB, IHC; Recommended dilution: WB:1:500-1:2000, IHC:1:20-1:200
<b>Form</b>	Liquid
<b>Conjugate</b>	Non-conjugated
<b>Storage Buffer</b>	Preservative: 0.03% Proclin 300 Constituents: 50% Glycerol, 0.01M PBS, PH 7.4
<b>Purification Method</b>	>95%, Protein G purified
<b>Isotype</b>	IgG
<b>Clonality</b>	Polyclonal
<b>Alias</b>	Coiled-coil domain-containing protein 14, CCDC14
<b>Immunogen Species</b>	Homo sapiens (Human)
<b>Research Area</b>	Others
<b>Target Names</b>	CCDC14

## Image



Western blot  
 All lanes: CCDC14 antibody at 2µg/ml + Jurkat whole cell lysate  
 Secondary  
 Goat polyclonal to rabbit IgG at 1/10000 dilution  
 Predicted band size: 107, 84, 89, 52, 102 kDa  
 Observed band size: 52 kDa



Immunohistochemistry of paraffin-embedded human endometrial cancer using CSB-PA672101EA01HU at dilution of 1:100

---

**Usage**

For Research Use Only. Not for use in diagnostic or therapeutic procedures.