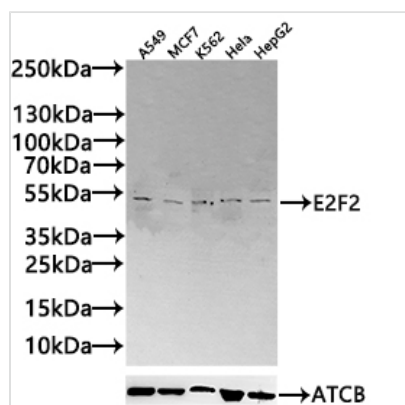




E2F2 Antibody

Product Code	CSB-PA623909LA01HU
Storage	Upon receipt, store at -20°C or -80°C. Avoid repeated freeze.
Uniprot No.	Q14209
Immunogen	Synthesized peptide derived from internal of human E2F2
Raised In	Rabbit
Species Reactivity	Human
Tested Applications	ELISA, WB, IHC; Recommended dilution: WB:1:1000-1:3000, IHC:1:100-1:300
Form	Liquid
Storage Buffer	Rabbit IgG in phosphate buffered saline (without Mg ²⁺ and Ca ²⁺), pH 7.4, 150mM NaCl, 0.02% sodium azide and 50% glycerol.
Purification Method	Antigen affinity purification
Isotype	IgG
Clonality	Polyclonal
Product Type	Polyclonal Antibody
Immunogen Species	Homo sapiens (Human)
Research Area	Epigenetics and Nuclear Signaling
Target Names	E2F2

Image

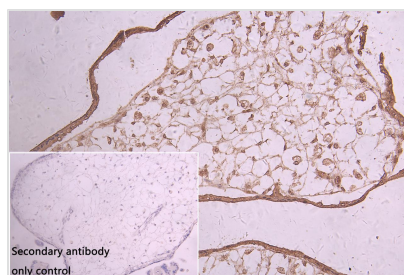


Western Blot

Positive WB detected in: A549 whole cell lysate(20µg), MCF7 whole cell lysate(20µg), K562 whole cell lysate(20µg), HeLa whole cell lysate(20µg), HepG2 whole cell lysate(20µg)
All lanes:E2F2 antibody at 1:1000

Secondary

Goat polyclonal to rabbit IgG at 1/20000 dilution
Predicted band size: 48 kDa
Observed band size: 48kDa
Exposure time: 120s



IHC image of CSB-PA623909LA01HU diluted at 1:100 and staining in paraffin-embedded human placenta tissue performed on a Leica BondTM system. After dewaxing and hydration, antigen retrieval was mediated by high pressure in a citrate buffer (pH 6.0). Section was blocked with 10% normal goat serum 30min at RT. Then primary antibody (1% BSA) was incubated at 4°C overnight. The primary is detected by a Goat anti-rabbit polymer IgG labeled by HRP and visualized using 0.05% DAB. Secondary



antibody only control: uses 1% BSA instead of primary antibody

Usage

For Research Use Only. Not for use in diagnostic or therapeutic procedures.