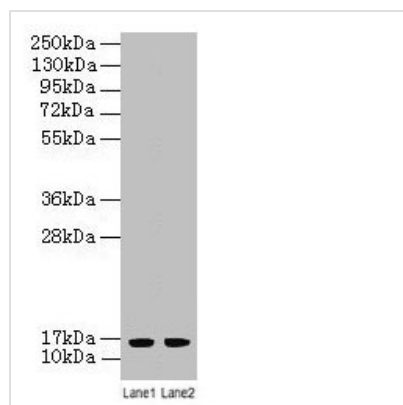




LSM4 Antibody

Product Code	CSB-PA013207HA01HU
Storage	Upon receipt, store at -20°C or -80°C. Avoid repeated freeze.
Uniprot No.	Q9Y4Z0
Immunogen	Recombinant Human U6 snRNA-associated Sm-like protein LSm4 protein (1-139AA)
Raised In	Rabbit
Species Reactivity	Human
Tested Applications	ELISA, WB, IHC, IF; Recommended dilution: WB:1:500-1:5000, IHC:1:20-1:200, IF:1:50-1:200
Form	Liquid
Conjugate	Non-conjugated
Storage Buffer	Preservative: 0.03% Proclin 300 Constituents: 50% Glycerol, 0.01M PBS, PH 7.4
Purification Method	>95%, Protein G purified
Isotype	IgG
Clonality	Polyclonal
Product Type	Polyclonal Antibody
Immunogen Species	Homo sapiens (Human)
Research Area	Epigenetics and Nuclear Signaling
Target Names	LSM4

Image



Western blot

All lanes: LSM4 antibody at 2µg/ml

Lane 1: A549 whole cell lysate

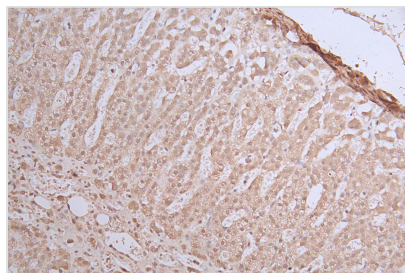
Lane 2: K562 whole cell lysate

Secondary

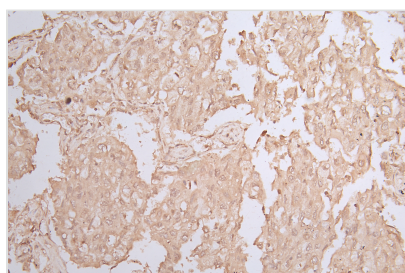
Goat polyclonal to rabbit IgG at 1/10000 dilution

Predicted band size: 16 kDa

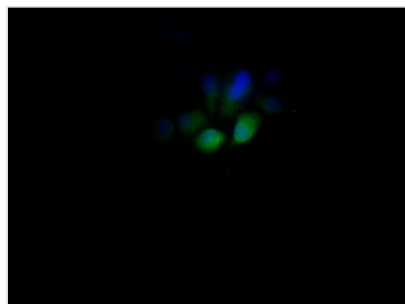
Observed band size: 16 kDa



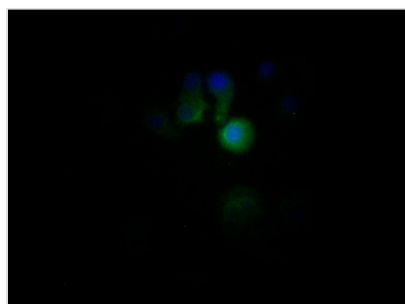
Immunohistochemistry of paraffin-embedded human adrenal gland tissue using CSB-PA013207HA01HU at dilution of 1:200



Immunohistochemistry of paraffin-embedded human lung cancer using CSB-PA013207HA01HU at dilution of 1:200



Immunofluorescent analysis of HeLa cells using CSB-PA013207HA01HU at dilution of 1:100 and Alexa Fluor 488-conjugated AffiniPure Goat Anti-Rabbit IgG(H+L)



Immunofluorescent analysis of HepG2 cells using CSB-PA013207HA01HU at dilution of 1:100 and Alexa Fluor 488-conjugated AffiniPure Goat Anti-Rabbit IgG(H+L)

Usage

For Research Use Only. Not for use in diagnostic or therapeutic procedures.