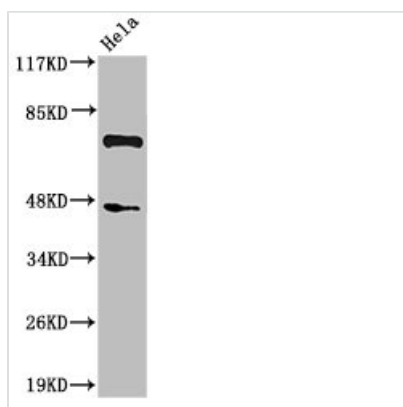




Cleaved-C1S (R437) Antibody

Product Code	CSB-PA000017
Storage	Upon receipt, store at -20°C or -80°C. Avoid repeated freeze.
Uniprot No.	P09871
Immunogen	Synthesized peptide derived from the Internal region of Human C1s HC.
Raised In	Rabbit
Species Reactivity	Human
Tested Applications	WB, ELISA; WB:1:500-1:2000, ELISA:1:20000
Form	Liquid
Conjugate	Non-conjugated
Storage Buffer	Liquid in PBS containing 50% glycerol, 0.5% BSA and 0.02% sodium azide.
Purification Method	The antibody was affinity-purified from rabbit antiserum by affinity-chromatography using epitope-specific immunogen.
Isotype	IgG
Alias	C1S; Complement C1s subcomponent; C1 esterase; Complement component 1 subcomponent s
Immunogen Species	Homo sapiens (Human)
Target Names	C1S

Image



Western Blot analysis of HeLa cells using Cleaved-C1s HC (R437) Polyclonal Antibody