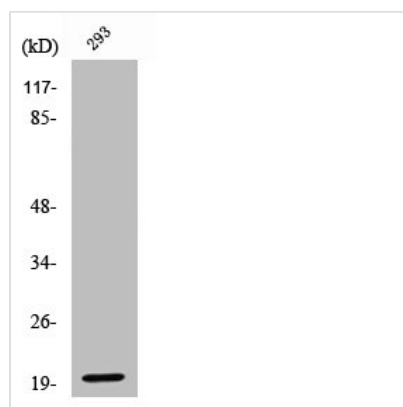




Cleaved-EFNA2 (N188) Antibody

Product Code	CSB-PA000043
Storage	Upon receipt, store at -20°C or -80°C. Avoid repeated freeze.
Uniprot No.	O43921
Immunogen	Synthesized peptide derived from the C-terminal region of Human Ephrin-A2.
Raised In	Rabbit
Species Reactivity	Human, Mouse
Tested Applications	WB, ELISA; WB:1:500-1:2000, ELISA:1:20000
Form	Liquid
Conjugate	Non-conjugated
Storage Buffer	Liquid in PBS containing 50% glycerol, 0.5% BSA and 0.02% sodium azide.
Purification Method	The antibody was affinity-purified from rabbit antiserum by affinity-chromatography using epitope-specific immunogen.
Isotype	IgG
Alias	EFNA2; EPLG6; LERK6; Ephrin-A2; EPH-related receptor tyrosine kinase ligand 6; LERK-6; HEK7 ligand; HEK7-L
Immunogen Species	Homo sapiens (Human)
Target Names	EFNA2

Image



Western Blot analysis of 293 cells using Cleaved-Ephrin-A2 (N188) Polyclonal Antibody

Usage

For Research Use Only. Not for use in diagnostic or therapeutic procedures.