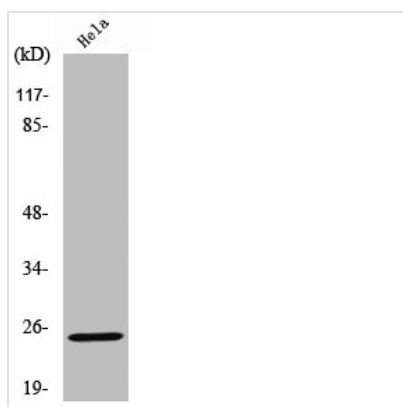




Cleaved-KLK11 (I54) Antibody

Product Code	CSB-PA000045
Storage	Upon receipt, store at -20°C or -80°C. Avoid repeated freeze.
Uniprot No.	Q9UBX7
Immunogen	Synthesized peptide derived from the Internal region of Human KLK11.
Raised In	Rabbit
Species Reactivity	Human
Tested Applications	WB, ELISA; WB:1:500-1:2000, ELISA:1:10000
Form	Liquid
Conjugate	Non-conjugated
Storage Buffer	Liquid in PBS containing 50% glycerol, 0.5% BSA and 0.02% sodium azide.
Purification Method	The antibody was affinity-purified from rabbit antiserum by affinity-chromatography using epitope-specific immunogen.
Isotype	IgG
Alias	KLK11; PRSS20; TLSP; Kallikrein-11; hK11; Hippostasin; Serine protease 20; Trypsin-like protease
Immunogen Species	Homo sapiens (Human)
Target Names	KLK11

Image



Western Blot analysis of HeLa cells using Cleaved-KLK11 (I54) Polyclonal Antibody

Usage

For Research Use Only. Not for use in diagnostic or therapeutic procedures.