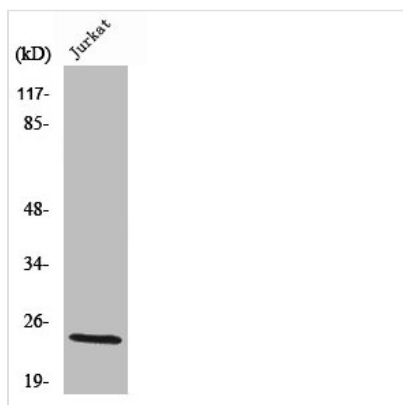




Cleaved-KLK8 (V33) Antibody

Product Code	CSB-PA000046
Storage	Upon receipt, store at -20°C or -80°C. Avoid repeated freeze.
Uniprot No.	O60259
Immunogen	Synthesized peptide derived from the N-terminal region of Human KLK8.
Raised In	Rabbit
Species Reactivity	Human
Tested Applications	WB, ELISA; WB:1:500-1:2000, ELISA:1:10000
Form	Liquid
Conjugate	Non-conjugated
Storage Buffer	Liquid in PBS containing 50% glycerol, 0.5% BSA and 0.02% sodium azide.
Purification Method	The antibody was affinity-purified from rabbit antiserum by affinity-chromatography using epitope-specific immunogen.
Isotype	IgG
Alias	KLK8; NRPN; PRSS19; TADG14; Kallikrein-8; hK8; Neuropsin; NP; Ovasin; Serine protease 19; Serine protease TADG-14; Tumor-associated differentially expressed gene 14 protein
Immunogen Species	Homo sapiens (Human)
Target Names	KLK8

Image



Western Blot analysis of Jurkat cells using Cleaved-KLK8 (V33) Polyclonal Antibody

Usage For Research Use Only. Not for use in diagnostic or therapeutic procedures.