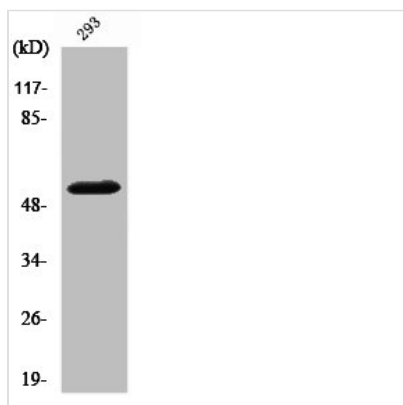




Cleaved-MMP14 (Y112) Antibody

Product Code	CSB-PA000050
Storage	Upon receipt, store at -20°C or -80°C. Avoid repeated freeze.
Uniprot No.	P50281
Immunogen	Synthesized peptide derived from the Internal region of Human MMP-14.
Raised In	Rabbit
Species Reactivity	Human,Mouse,Rat
Tested Applications	WB, ELISA; WB:1:500-1:2000, ELISA:1:20000
Form	Liquid
Conjugate	Non-conjugated
Storage Buffer	Liquid in PBS containing 50% glycerol, 0.5% BSA and 0.02% sodium azide.
Purification Method	The antibody was affinity-purified from rabbit antiserum by affinity-chromatography using epitope-specific immunogen.
Isotype	IgG
Alias	MMP14; Matrix metalloproteinase-14; MMP-14; MMP-X1; Membrane-type matrix metalloproteinase 1; MT-MMP 1; MTMMP1; Membrane-type-1 matrix metalloproteinase; MT1-MMP; MT1MMP
Immunogen Species	Homo sapiens (Human)
Target Names	MMP14

Image



Western Blot analysis of 293 cells using Cleaved-MMP-14 (Y112) Polyclonal Antibody

Usage

For Research Use Only. Not for use in diagnostic or therapeutic procedures.