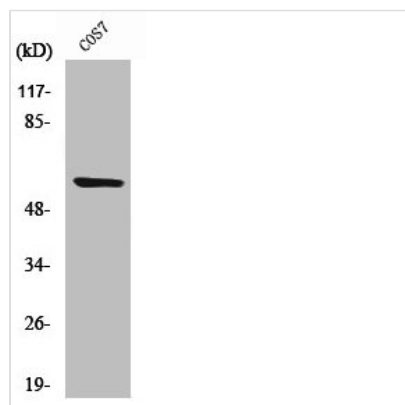




Cleaved-MMP15 (Y132) Antibody

Product Code	CSB-PA000052
Storage	Upon receipt, store at -20°C or -80°C. Avoid repeated freeze.
Uniprot No.	P51511
Immunogen	Synthesized peptide derived from the Internal region of Human MMP-15.
Raised In	Rabbit
Species Reactivity	Human,Monkey
Tested Applications	WB, ELISA; WB:1:500-1:2000, ELISA:1:10000
Form	Liquid
Conjugate	Non-conjugated
Storage Buffer	Liquid in PBS containing 50% glycerol, 0.5% BSA and 0.02% sodium azide.
Purification Method	The antibody was affinity-purified from rabbit antiserum by affinity-chromatography using epitope-specific immunogen.
Isotype	IgG
Alias	MMP15; Matrix metalloproteinase-15; MMP-15; Membrane-type matrix metalloproteinase 2; MT-MMP 2; MTMMP2; Membrane-type-2 matrix metalloproteinase; MT2-MMP; MT2MMP; SMCP-2
Immunogen Species	Homo sapiens (Human)
Target Names	MMP15

Image



Western Blot analysis of COS7 cells using Cleaved-MMP-15 (Y132) Polyclonal Antibody

Usage

For Research Use Only. Not for use in diagnostic or therapeutic procedures.