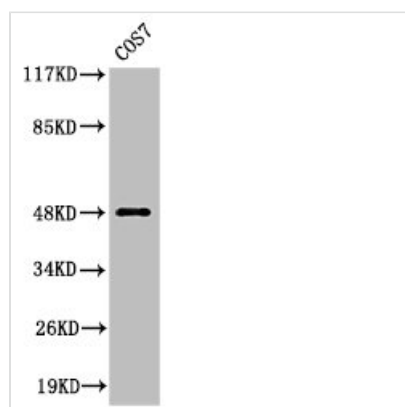




Cleaved-MMP27 (Y99) Antibody

Product Code	CSB-PA000055
Storage	Upon receipt, store at -20°C or -80°C. Avoid repeated freeze.
Uniprot No.	Q9H306
Immunogen	Synthesized peptide derived from the Internal region of Human MMP-27.
Raised In	Rabbit
Species Reactivity	Human,Monkey
Tested Applications	WB, ELISA; WB:1:500-1:2000, ELISA:1:10000
Form	Liquid
Conjugate	Non-conjugated
Storage Buffer	Liquid in PBS containing 50% glycerol, 0.5% BSA and 0.02% sodium azide.
Purification Method	The antibody was affinity-purified from rabbit antiserum by affinity-chromatography using epitope-specific immunogen.
Isotype	IgG
Alias	MMP27; Matrix metalloproteinase-27; MMP-27
Immunogen Species	Homo sapiens (Human)
Target Names	MMP27

Image



Western Blot analysis of COS7 cells using Cleaved-MMP-27 (Y99) Polyclonal Antibody

Usage

For Research Use Only. Not for use in diagnostic or therapeutic procedures.