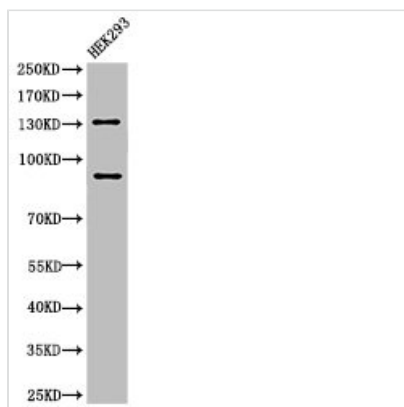




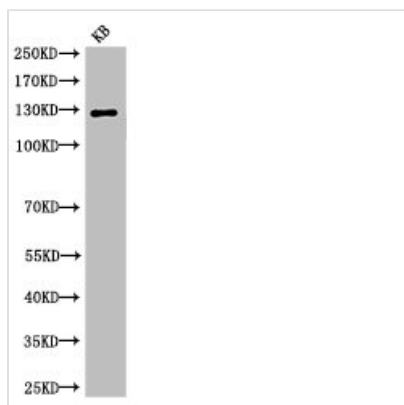
Cleaved-NOTCH2 (D1733) Antibody

Product Code	CSB-PA000058
Storage	Upon receipt, store at -20°C or -80°C. Avoid repeated freeze.
Uniprot No.	Q04721
Immunogen	Synthesized peptide derived from the Internal region of Human Notch 2.
Raised In	Rabbit
Species Reactivity	Human,Mouse,Rat
Tested Applications	WB, IHC, ELISA; WB:1:500-1:2000, IHC:1:100-1:300, ELISA:1:40000
Form	Liquid
Conjugate	Non-conjugated
Storage Buffer	Liquid in PBS containing 50% glycerol, 0.5% BSA and 0.02% sodium azide.
Purification Method	The antibody was affinity-purified from rabbit antiserum by affinity-chromatography using epitope-specific immunogen.
Isotype	IgG
Alias	NOTCH2; Neurogenic locus notch homolog protein 2; Notch 2; hN2
Immunogen Species	Homo sapiens (Human)
Target Names	NOTCH2

Image



Western Blot analysis of 293 cells using Cleaved-Notch 2 (D1733) Polyclonal Antibody



Western Blot analysis of KB cells using Cleaved-Notch 2 (D1733) Polyclonal Antibody



Usage

For Research Use Only. Not for use in diagnostic or therapeutic procedures.