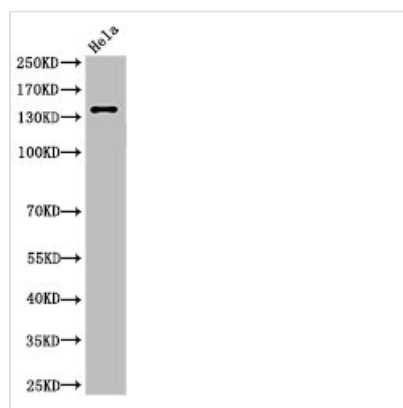




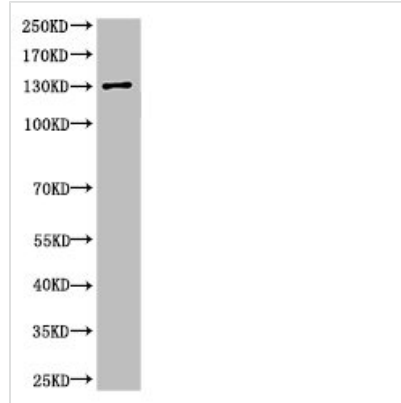
Cleaved-SPTAN1 (D1185) Antibody

Product Code	CSB-PA000060
Storage	Upon receipt, store at -20°C or -80°C. Avoid repeated freeze.
Uniprot No.	Q13813
Immunogen	Synthesized peptide derived from the Internal region of Human Spectrin α II.
Raised In	Rabbit
Species Reactivity	Human
Tested Applications	WB, ELISA; WB:1:500-1:2000, ELISA:1:10000
Form	Liquid
Conjugate	Non-conjugated
Storage Buffer	Liquid in PBS containing 50% glycerol, 0.5% BSA and 0.02% sodium azide.
Purification Method	The antibody was affinity-purified from rabbit antiserum by affinity-chromatography using epitope-specific immunogen.
Isotype	IgG
Alias	SPTAN1; NEAS; SPTA2; Spectrin alpha chain; non-erythrocytic 1; Alpha-II spectrin; Fodrin alpha chain; Spectrin, non-erythroid alpha subunit
Immunogen Species	Homo sapiens (Human)
Target Names	SPTAN1

Image



Western Blot analysis of HeLa cells using Cleaved-Spectrin α II (D1185) Polyclonal Antibody



Western Blot analysis of customer's (cat sample) using Cleaved-Spectrin α II (D1185) Polyclonal Antibody

Usage

For Research Use Only. Not for use in diagnostic or therapeutic procedures.