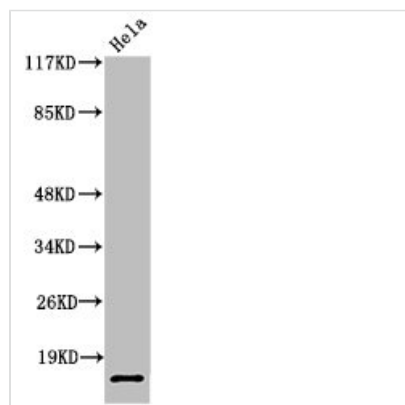




Cleaved-SUMO2 (G93) Antibody

Product Code	CSB-PA000062
Storage	Upon receipt, store at -20°C or -80°C. Avoid repeated freeze.
Uniprot No.	P61956
Immunogen	Synthesized peptide derived from the Internal region of Human SUMO-2/3.
Raised In	Rabbit
Species Reactivity	Human,Mouse,Rat
Tested Applications	WB, ELISA; WB:1:500-1:2000, ELISA:1:20000
Form	Liquid
Conjugate	Non-conjugated
Storage Buffer	Liquid in PBS containing 50% glycerol, 0.5% BSA and 0.02% sodium azide.
Purification Method	The antibody was affinity-purified from rabbit antiserum by affinity-chromatography using epitope-specific immunogen.
Isotype	IgG
Alias	SUMO2; SMT3A; SMT3H2; Small ubiquitin-related modifier 2; SUMO-2; HSMT3; SMT3 homolog 2; SUMO-3; Sentrin-2; Ubiquitin-like protein SMT3A; Smt3A
Immunogen Species	Homo sapiens (Human)
Target Names	SUMO2

Image



Western Blot analysis of HeLa cells using Cleaved-SUMO-2/3 (G93) Polyclonal Antibody