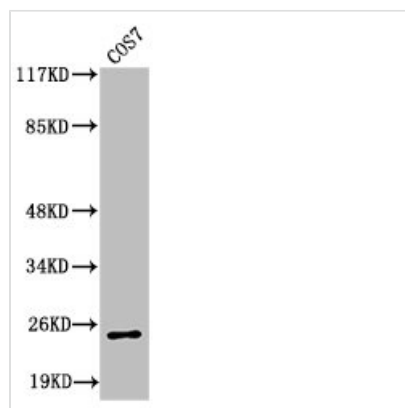




# Cleaved-ITGA7 (E959) Antibody

|                            |   |
|----------------------------|---|
| <b>Product Code</b>        | CSB-PA000073  |
| <b>Storage</b>             | Upon receipt, store at -20°C or -80°C. Avoid repeated freeze.   |
| <b>Uniprot No.</b>         | Q13683  |
| <b>Immunogen</b>           | Synthesized peptide derived from the C-terminal region of Human Integrin $\alpha$ 7 LC.                               |
| <b>Raised In</b>           | Rabbit  |
| <b>Species Reactivity</b>  | Human,Monkey  |
| <b>Tested Applications</b> | WB, ELISA; WB:1:500-1:2000, ELISA:1:40000   |
| <b>Form</b>                | Liquid  |
| <b>Conjugate</b>           | Non-conjugated  |
| <b>Storage Buffer</b>      | Liquid in PBS containing 50% glycerol, 0.5% BSA and 0.02% sodium azide.   |
| <b>Purification Method</b> | The antibody was affinity-purified from rabbit antiserum by affinity-chromatography using epitope-specific immunogen. |
| <b>Isotype</b>             | IgG   |
| <b>Alias</b>               | ITGA7; Integrin alpha-7   |
| <b>Immunogen Species</b>   | Homo sapiens (Human)  |
| <b>Target Names</b>        | ITGA7   |

## Image



Western Blot analysis of COS7 cells using Cleaved-Integrin  $\alpha$ 7 LC (E959) Polyclonal Antibody

## Usage

For Research Use Only. Not for use in diagnostic or therapeutic procedures.