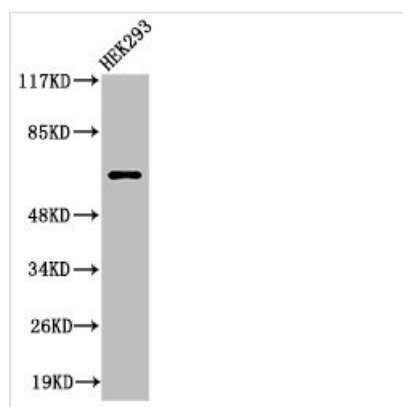




Cleaved-ITIH2 (D702) Antibody

Product Code	CSB-PA000075
Storage	Upon receipt, store at -20°C or -80°C. Avoid repeated freeze.
Uniprot No.	P19823
Immunogen	Synthesized peptide derived from the Internal region of Human ITI-H2.
Raised In	Rabbit
Species Reactivity	Human
Tested Applications	WB, ELISA; WB:1:500-1:2000, ELISA:1:10000
Form	Liquid
Conjugate	Non-conjugated
Storage Buffer	Liquid in PBS containing 50% glycerol, 0.5% BSA and 0.02% sodium azide.
Purification Method	The antibody was affinity-purified from rabbit antiserum by affinity-chromatography using epitope-specific immunogen.
Isotype	IgG
Alias	ITIH2; IGHEP2; Inter-alpha-trypsin inhibitor heavy chain H2; ITI heavy chain H2; ITI-HC2; Inter-alpha-inhibitor heavy chain 2; Inter-alpha-trypsin inhibitor complex component II; Serum-derived hyaluronan-associated protein; SHAP
Immunogen Species	Homo sapiens (Human)
Target Names	ITIH2

Image



Western Blot analysis of 293 cells using Cleaved-ITI-H2 (D702) Polyclonal Antibody

Usage For Research Use Only. Not for use in diagnostic or therapeutic procedures.