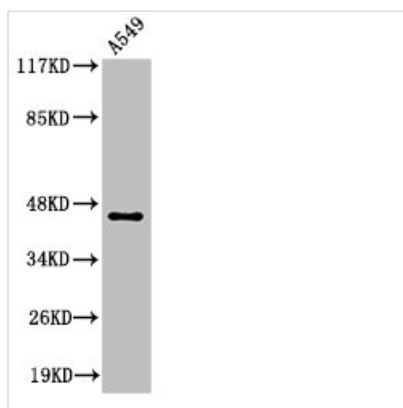




# Cleaved-MASP1 (R448) Antibody

<b>Product Code</b>	CSB-PA000076
<b>Storage</b>	Upon receipt, store at -20°C or -80°C. Avoid repeated freeze.
<b>Uniprot No.</b>	P48740
<b>Immunogen</b>	Synthesized peptide derived from the Internal region of Human MASP-1 HC.
<b>Raised In</b>	Rabbit
<b>Species Reactivity</b>	Human
<b>Tested Applications</b>	WB, ELISA; WB:1:500-1:2000, ELISA:1:10000
<b>Form</b>	Liquid
<b>Conjugate</b>	Non-conjugated
<b>Storage Buffer</b>	Liquid in PBS containing 50% glycerol, 0.5% BSA and 0.02% sodium azide.
<b>Purification Method</b>	The antibody was affinity-purified from rabbit antiserum by affinity-chromatography using epitope-specific immunogen.
<b>Isotype</b>	IgG
<b>Alias</b>	MASP1; CRARF; CRARF1; PRSS5; Mannan-binding lectin serine protease 1; Complement factor MASP-3; Complement-activating component of Ra-reactive factor; Mannose-binding lectin-associated serine protease 1; MASP-1; Mannose-binding protein-asso
<b>Immunogen Species</b>	Homo sapiens (Human)
<b>Target Names</b>	MASP1

## Image



Western Blot analysis of A549 cells using Cleaved-MASP-1 HC (R448) Polyclonal Antibody