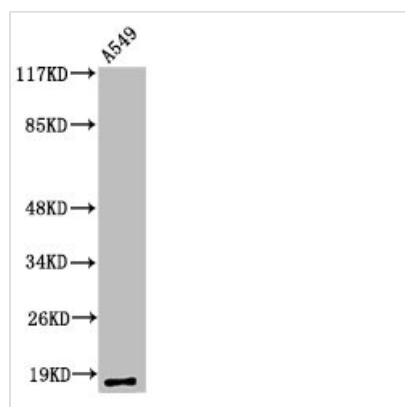




Cleaved-MMP1 (F100) Antibody

| | |
|----------------------------|---|
| Product Code | CSB-PA000078 |
| Storage | Upon receipt, store at -20°C or -80°C. Avoid repeated freeze. |
| Uniprot No. | P03956 |
| Immunogen | Synthesized peptide derived from the Internal region of Human MMP-1 22k. |
| Raised In | Rabbit |
| Species Reactivity | Human |
| Tested Applications | WB, ELISA; WB:1:500-1:2000, ELISA:1:10000 |
| Form | Liquid |
| Conjugate | Non-conjugated |
| Storage Buffer | Liquid in PBS containing 50% glycerol, 0.5% BSA and 0.02% sodium azide. |
| Purification Method | The antibody was affinity-purified from rabbit antiserum by affinity-chromatography using epitope-specific immunogen. |
| Isotype | IgG |
| Alias | MMP1; CLG; Interstitial collagenase; Fibroblast collagenase; Matrix metalloproteinase-1; MMP-1 |
| Immunogen Species | Homo sapiens (Human) |
| Target Names | MMP1 |

Image



Western Blot analysis of A549 cells using Cleaved-MMP-1 22k (F100) Polyclonal Antibody