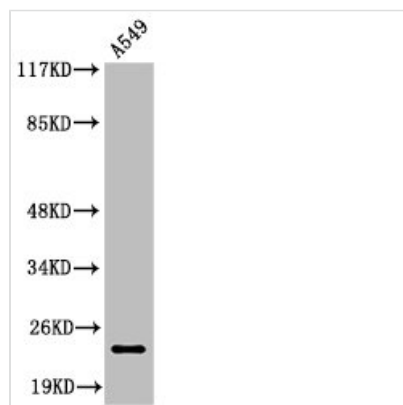




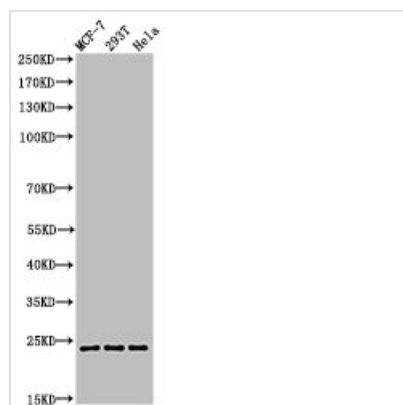
Cleaved-PARP1 (D214) Antibody

Product Code	CSB-PA000080
Storage	Upon receipt, store at -20°C or -80°C. Avoid repeated freeze.
Uniprot No.	P09874
Immunogen	Synthesized peptide derived from the Internal region of Human PARP-1.
Raised In	Rabbit
Species Reactivity	Human, Mouse
Tested Applications	WB, ELISA; WB:1:500-1:2000, ELISA:1:20000
Form	Liquid
Conjugate	Non-conjugated
Storage Buffer	Liquid in PBS containing 50% glycerol, 0.5% BSA and 0.02% sodium azide.
Purification Method	The antibody was affinity-purified from rabbit antiserum by affinity-chromatography using epitope-specific immunogen.
Isotype	IgG
Alias	PARP1; ADPRT; PPOL; Poly [ADP-ribose] polymerase 1; PARP-1; ADP-ribosyltransferase diphtheria toxin-like 1; ARTD1; NAD(+) ADP-ribosyltransferase 1; ADPRT 1; Poly[ADP-ribose] synthase 1
Immunogen Species	Homo sapiens (Human)
Target Names	PARP1

Image



Western Blot analysis of A549 cells using Cleaved-PARP1 (D214) Polyclonal Antibody



Western Blot analysis of MCF7 293T HELA cells using Cleaved-PARP-1 (D214) Polyclonal Antibody