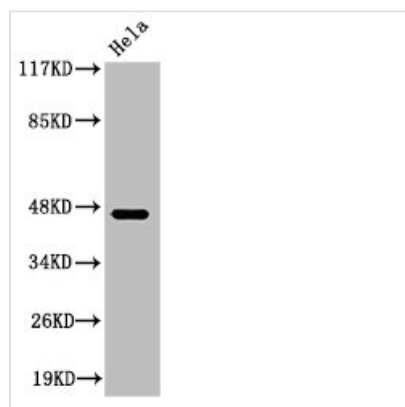




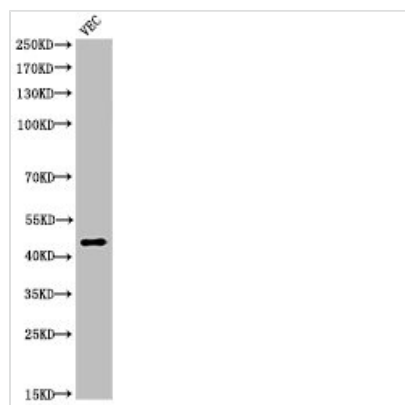
Cleaved-KLKB1 (R390) Antibody

Product Code	CSB-PA000082
Storage	Upon receipt, store at -20°C or -80°C. Avoid repeated freeze.
Uniprot No.	P03952
Immunogen	Synthesized peptide derived from the Internal region of Human Plasma Kallikrein HC.
Raised In	Rabbit
Species Reactivity	Human
Tested Applications	WB, IHC, ELISA; WB:1:500-1:2000, IHC:1:100-1:300, ELISA:1:10000
Form	Liquid
Conjugate	Non-conjugated
Storage Buffer	Liquid in PBS containing 50% glycerol, 0.5% BSA and 0.02% sodium azide.
Purification Method	The antibody was affinity-purified from rabbit antiserum by affinity-chromatography using epitope-specific immunogen.
Isotype	IgG
Alias	KLKB1; KLK3; Plasma kallikrein; Fletcher factor; Kininogenin; Plasma prekallikrein
Immunogen Species	Homo sapiens (Human)
Target Names	KLKB1

Image



Western Blot analysis of HeLa cells using Cleaved-Plasma Kallikrein HC (R390) Polyclonal Antibody



Western Blot analysis of VEC cells using
Cleaved-Plasma Kallikrein HC (R390) Polyclonal
Antibody