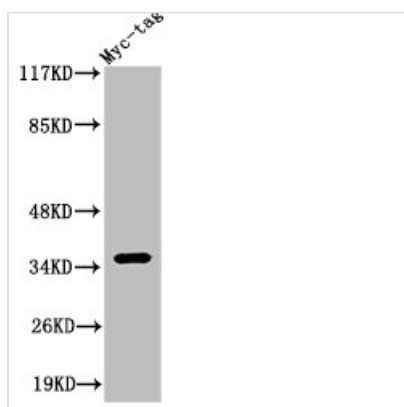




# Myc-tag Antibody

<b>Product Code</b>	CSB-PA000085
<b>Storage</b>	Upon receipt, store at -20°C or -80°C. Avoid repeated freeze.
<b>Immunogen</b>	Myc synthetic peptide conjugated to KLH.
<b>Raised In</b>	Rabbit
<b>Tested Applications</b>	WB, ELISA; WB:1:1000-1:3000, ELISA:1:20000
<b>Form</b>	Liquid
<b>Conjugate</b>	Non-conjugated
<b>Storage Buffer</b>	Liquid in PBS containing 50% glycerol, 0.5% BSA and 0.05% sodium azide.
<b>Purification Method</b>	The antibody was affinity-purified from rabbit antiserum by affinity-chromatography using epitope-specific immunogen.
<b>Isotype</b>	IgG
<b>Alias</b>	c Myc; c Myc Epitope Tag; c Myc Tag; Myc Epitope Tag; Myc proto-oncogene protein; Transcription factor p64

## Image



Western Blot analysis of Myc-tag cells using Myc-tag Polyclonal Antibody