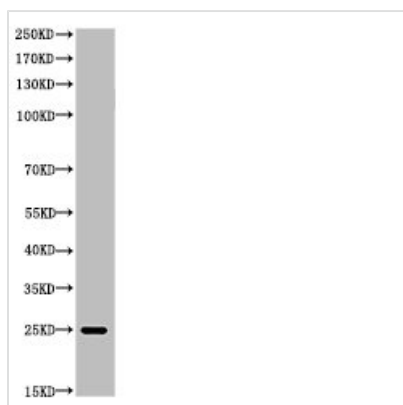




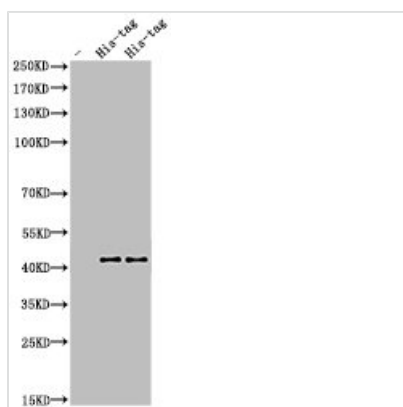
His-tag Antibody

Product Code	CSB-PA000086
Storage	Upon receipt, store at -20°C or -80°C. Avoid repeated freeze.
Immunogen	6X His synthetic peptide conjugated to KLH.
Raised In	Rabbit
Tested Applications	WB, ELISA; WB:1:1000-1:3000, ELISA:1:20000
Form	Liquid
Conjugate	Non-conjugated
Storage Buffer	Liquid in PBS containing 50% glycerol, 0.5% BSA and 0.02% sodium azide.
Purification Method	The antibody was affinity-purified from rabbit antiserum by affinity-chromatography using epitope-specific immunogen.
Isotype	IgG
Alias	6 His epitope tag; Hexa His tag; HHHHHH epitope tag; HHHHHH tag; His tag

Image



Western Blot analysis of HIS-protein cells using His-tag Polyclonal Antibody



Western Blot analysis of His-Tag protein cells using His-tag Polyclonal Antibody

Usage

For Research Use Only. Not for use in diagnostic or therapeutic procedures.