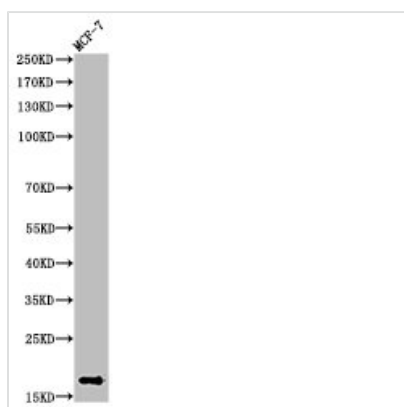




Mono-Methyl-Histone H3 (K10) Antibody

Product Code	CSB-PA000089
Storage	Upon receipt, store at -20°C or -80°C. Avoid repeated freeze.
Uniprot No.	P68431/Q71DI3/P84243/Q6NXT2
Immunogen	Synthesized peptide derived from Human Histone H3 around the mono-methylation site of K10.
Raised In	Rabbit
Species Reactivity	Human,Mouse,Rat
Tested Applications	WB, ELISA; WB:1:500-1:2000, ELISA:1:20000
Form	Liquid
Conjugate	Non-conjugated
Storage Buffer	Liquid in PBS containing 50% glycerol, 0.5% BSA and 0.02% sodium azide.
Purification Method	The antibody was affinity-purified from rabbit antiserum by affinity-chromatography using epitope-specific immunogen.
Isotype	IgG
Alias	HIST1H3A; H3FA; HIST1H3B; H3FL; HIST1H3C; H3FC; HIST1H3D; H3FB; HIST1H3E; H3FD; HIST1H3F; H3FI; HIST1H3G; H3FH; HIST1H3H; H3FK; HIST1H3I; H3FF; HIST1H3J; H3FJ; Histone H3.1;
Immunogen Species	Homo sapiens (Human)
Target Names	HIST1H3A/HIST2H3A/H3F3A/H3F3C

Image



Western Blot analysis of MCF-7 cells using Mono-Methyl-Histone H3 (K10) Polyclonal Antibody

Usage

For Research Use Only. Not for use in diagnostic or therapeutic procedures.