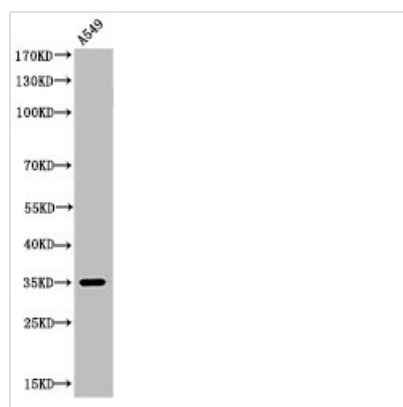




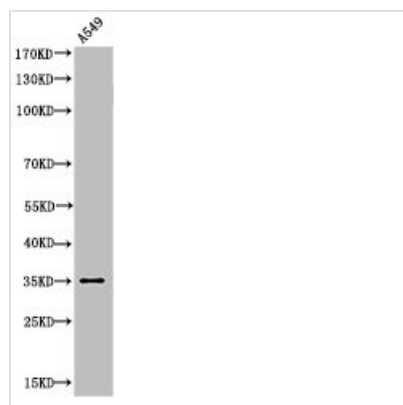
# Acetyl-APEX1 (K6) Antibody

|                            |  |
|----------------------------|--|
| <b>Product Code</b>        | CSB-PA000108   |
| <b>Storage</b>             | Upon receipt, store at -20°C or -80°C. Avoid repeated freeze.  |
| <b>Uniprot No.</b>         | P27695   |
| <b>Immunogen</b>           | Synthesized peptide derived from the Human Ref-1 around the acetylation site of K6.  |
| <b>Raised In</b>           | Rabbit   |
| <b>Species Reactivity</b>  | Human  |
| <b>Tested Applications</b> | WB, ELISA; WB:1:500-1:2000, ELISA:1:20000  |
| <b>Form</b>                | Liquid   |
| <b>Conjugate</b>           | Non-conjugated   |
| <b>Storage Buffer</b>      | Liquid in PBS containing 50% glycerol, 0.5% BSA and 0.02% sodium azide.  |
| <b>Purification Method</b> | The antibody was affinity-purified from rabbit antiserum by affinity-chromatography using epitope-specific immunogen.  |
| <b>Isotype</b>             | IgG  |
| <b>Alias</b>               | APEX1; APE; APE1; APEX; APX; HAP1; REF1; DNA-(apurinic or apyrimidinic site) lyase; APEX nuclease; APEN; Apurinic-apyrimidinic endonuclease 1; AP endonuclease 1; APE-1; REF-1; Redox factor-1 |
| <b>Immunogen Species</b>   | Homo sapiens (Human)   |
| <b>Target Names</b>        | APEX1  |

## Image



Western Blot analysis of A549 cells using Acetyl-Ref-1 (K6) Polyclonal Antibody



Western Blot analysis of A549 cells using Acetyl-Ref-1 (K6) Polyclonal Antibody