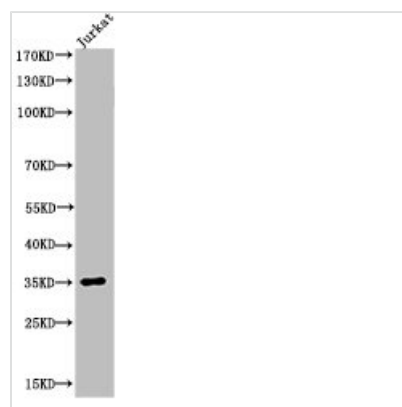




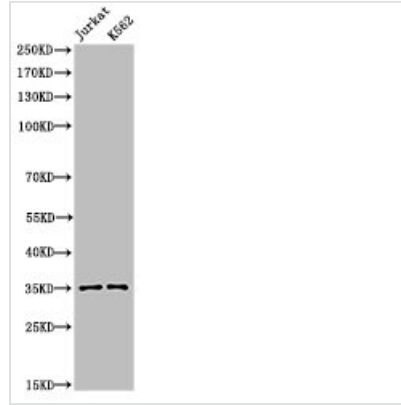
# Acetyl-APEX1 (K7) Antibody

<b>Product Code</b>	CSB-PA000109
<b>Storage</b>	Upon receipt, store at -20°C or -80°C. Avoid repeated freeze.
<b>Uniprot No.</b>	P27695
<b>Immunogen</b>	Synthesized peptide derived from the Human Ref-1 around the acetylation site of K7.
<b>Raised In</b>	Rabbit
<b>Species Reactivity</b>	Human
<b>Tested Applications</b>	WB,ELISA;WB:1/500-1/2000.ELISA:1/20000
<b>Form</b>	Liquid
<b>Conjugate</b>	Non-conjugated
<b>Storage Buffer</b>	Liquid in PBS containing 50% glycerol, 0.5% BSA and 0.02% sodium azide.
<b>Purification Method</b>	The antibody was affinity-purified from rabbit antiserum by affinity-chromatography using epitope-specific immunogen.
<b>Isotype</b>	IgG
<b>Alias</b>	APEX1; APE; APE1; APEX; APX; HAP1; REF1; DNA-(apurinic or apyrimidinic site) lyase; APEX nuclease; APEN; Apurinic-apyrimidinic endonuclease 1; AP endonuclease 1; APE-1; REF-1; Redox factor-1
<b>Species</b>	Homo sapiens (Human)
<b>Target Names</b>	APEX1

## Image



Western Blot analysis of JK cells using Acetyl-Ref-1 (K7) Polyclonal Antibody



Western Blot analysis of JurkatK562 cells using Acetyl-Ref-1 (K7) Polyclonal Antibody