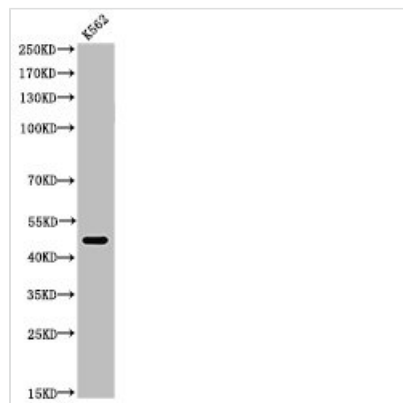




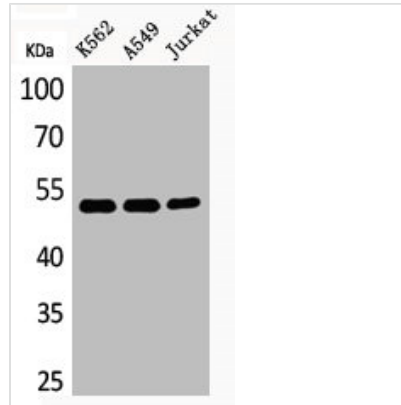
Acetyl-TUBA1A (K352) Antibody

Product Code	CSB-PA000128
Storage	Upon receipt, store at -20°C or -80°C. Avoid repeated freeze.
Uniprot No.	Q71U36
Immunogen	Synthesized peptide derived from the Human Tubulin α around the acetylation site of K352.
Raised In	Rabbit
Species Reactivity	Human,Mouse,Rat
Tested Applications	WB, ELISA; WB:1:500-1:2000, ELISA:1:20000
Form	Liquid
Conjugate	Non-conjugated
Storage Buffer	Liquid in PBS containing 50% glycerol, 0.5% BSA and 0.02% sodium azide.
Purification Method	The antibody was affinity-purified from rabbit antiserum by affinity-chromatography using epitope-specific immunogen.
Isotype	IgG
Alias	TUBA1A; TUBA3; Tubulin alpha-1A chain; Alpha-tubulin 3; Tubulin B-alpha-1; Tubulin alpha-3 chain; TUBA1B; Tubulin alpha-1B chain; Alpha-tubulin ubiquitous; Tubulin K-alpha-1; Tubulin alpha-ubiquitous chain; TUBA1C; TUBA6;
Immunogen Species	Homo sapiens (Human)
Target Names	TUBA1A

Image



Western Blot analysis of K562 cells using Acetyl-Tubulin α (K352) Polyclonal Antibody



Western Blot analysis of K562A549Jurkat cells using Acetyl-Tubulin α (K352) Polyclonal Antibody

Usage

For Research Use Only. Not for use in diagnostic or therapeutic procedures.