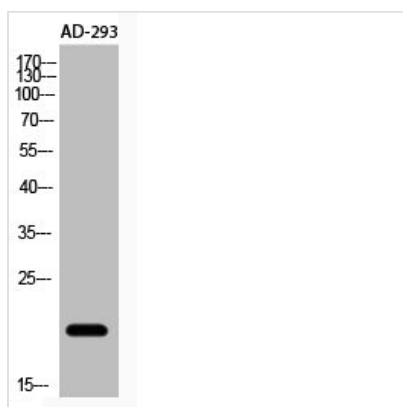




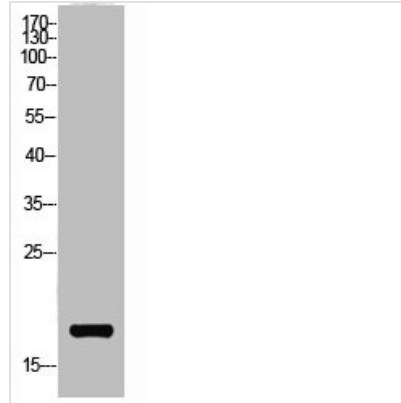
Acetyl-NFE4 (K43) Antibody

Product Code	CSB-PA000138
Storage	Upon receipt, store at -20°C or -80°C. Avoid repeated freeze.
Uniprot No.	Q86UQ8
Immunogen	Synthesized peptide derived from the Human NF-E4 around the acetylation site of K43.
Raised In	Rabbit
Species Reactivity	Human
Tested Applications	WB, ELISA; WB:1:500-1:2000, ELISA:1:20000
Form	Liquid
Conjugate	Non-conjugated
Storage Buffer	Liquid in PBS containing 50% glycerol, 0.5% BSA and 0.02% sodium azide.
Purification Method	The antibody was affinity-purified from rabbit antiserum by affinity-chromatography using epitope-specific immunogen.
Isotype	IgG
Alias	NFE4; Transcription factor NF-E4
Immunogen Species	Homo sapiens (Human)
Target Names	NFE4

Image



Western Blot analysis of AD-293 cells using Acetyl-NF-E4 (K43) Polyclonal Antibody



Western Blot analysis of AD-293 cells using Acetyl-NF-E4 (K43) Polyclonal Antibody

Usage

For Research Use Only. Not for use in diagnostic or therapeutic procedures.