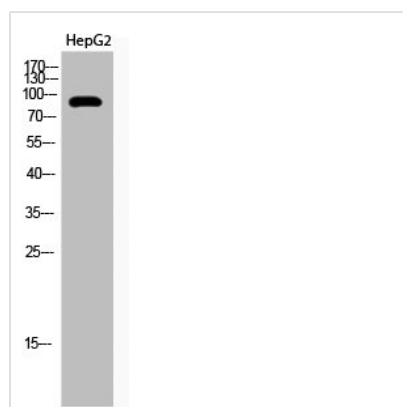




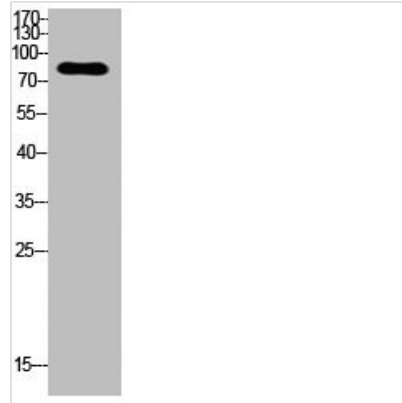
# Acetyl-KAT2B (K428) Antibody

<b>Product Code</b>	CSB-PA000141
<b>Storage</b>	Upon receipt, store at -20°C or -80°C. Avoid repeated freeze.
<b>Uniprot No.</b>	Q92831
<b>Immunogen</b>	Synthesized peptide derived from the Human PCAF around the acetylation site of K428.
<b>Raised In</b>	Rabbit
<b>Species Reactivity</b>	Human, Mouse
<b>Tested Applications</b>	WB, ELISA; WB:1:500-1:2000, ELISA:1:20000
<b>Form</b>	Liquid
<b>Conjugate</b>	Non-conjugated
<b>Storage Buffer</b>	Liquid in PBS containing 50% glycerol, 0.5% BSA and 0.02% sodium azide.
<b>Purification Method</b>	The antibody was affinity-purified from rabbit antiserum by affinity-chromatography using epitope-specific immunogen.
<b>Isotype</b>	IgG
<b>Alias</b>	KAT2B; PCAF; Histone acetyltransferase KAT2B; Histone acetyltransferase PCAF; Histone acetylase PCAF; Lysine acetyltransferase 2B; P300/CBP-associated factor; P/CAF
<b>Immunogen Species</b>	Homo sapiens (Human)
<b>Target Names</b>	KAT2B

## Image



Western Blot analysis of HepG2 cells using Acetyl-PCAF (K428) Polyclonal Antibody



Western Blot analysis of HepG2 cells using Acetyl-PCAF (K428) Polyclonal Antibody

### Usage

For Research Use Only. Not for use in diagnostic or therapeutic procedures.