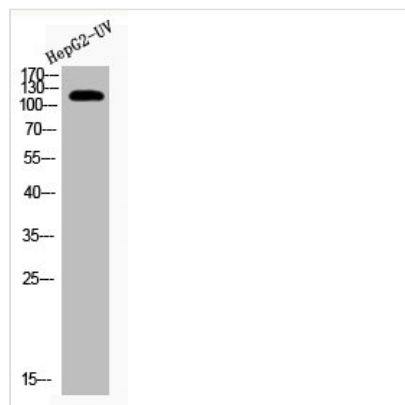




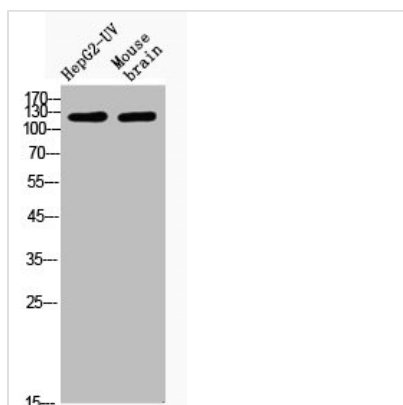
Acetyl-XPO1 (K568) Antibody

Product Code	CSB-PA000147
Storage	Upon receipt, store at -20°C or -80°C. Avoid repeated freeze.
Uniprot No.	O14980
Immunogen	Synthesized peptide derived from the Internal region of Human CRM1 around the acetylation site of K568.
Raised In	Rabbit
Species Reactivity	Human,Mouse,Rat
Tested Applications	WB, ELISA; WB:1:500-1:2000, ELISA:1:10000
Form	Liquid
Conjugate	Non-conjugated
Storage Buffer	Liquid in PBS containing 50% glycerol, 0.5% BSA and 0.02% sodium azide.
Purification Method	The antibody was affinity-purified from rabbit antiserum by affinity-chromatography using epitope-specific immunogen.
Isotype	IgG
Alias	XPO1; CRM1; Exportin-1; Exp1; Chromosome region maintenance 1 protein homolog
Immunogen Species	Homo sapiens (Human)
Target Names	XPO1

Image



Western Blot analysis of HEPG2-UV cells using Acetyl-CRM1 (K568) Polyclonal Antibody



Western Blot analysis of HepG2-UV mouse brain cells using Acetyl-CRM1 (K568) Polyclonal Antibody