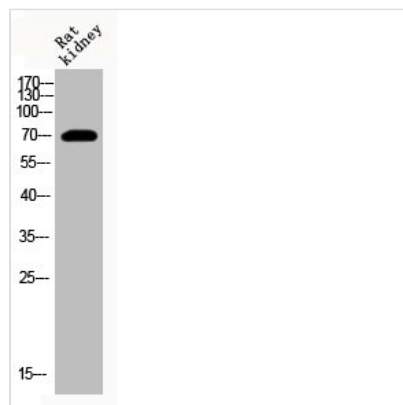




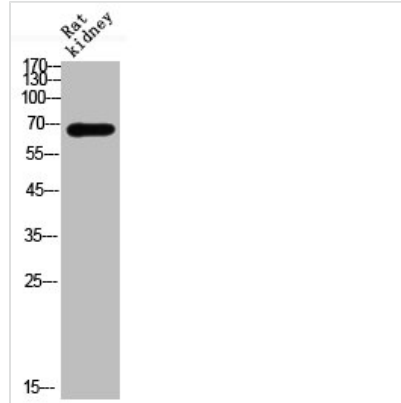
Acetyl-HSPA1A (K246) Antibody

| | |
|----------------------------|---|
| Product Code | CSB-PA000150 |
| Storage | Upon receipt, store at -20°C or -80°C. Avoid repeated freeze. |
| Uniprot No. | P08107 |
| Immunogen | Synthesized peptide derived from the Internal region of Human HSP70 around the acetylation site of K246. |
| Raised In | Rabbit |
| Species Reactivity | Human |
| Tested Applications | WB, ELISA; WB:1:500-1:2000, ELISA:1:10000 |
| Form | Liquid |
| Conjugate | Non-conjugated |
| Storage Buffer | Liquid in PBS containing 50% glycerol, 0.5% BSA and 0.02% sodium azide. |
| Purification Method | The antibody was affinity-purified from rabbit antiserum by affinity-chromatography using epitope-specific immunogen. |
| Isotype | IgG |
| Alias | HSPA1A; HSPA1; HSPA1B; Heat shock 70 kDa protein 1A/1B; Heat shock 70 kDa protein 1/2; HSP70-1/HSP70-2; HSP70.1/HSP70.2 |
| Immunogen Species | Homo sapiens (Human) |
| Target Names | HSPA1A |

Image



Western Blot analysis of RAT-kidney cells using Acetyl-HSP70 (K246) Polyclonal Antibody



Western Blot analysis of rat kidney cells using Acetyl-HSP70 (K246) Polyclonal Antibody

Usage

For Research Use Only. Not for use in diagnostic or therapeutic procedures.