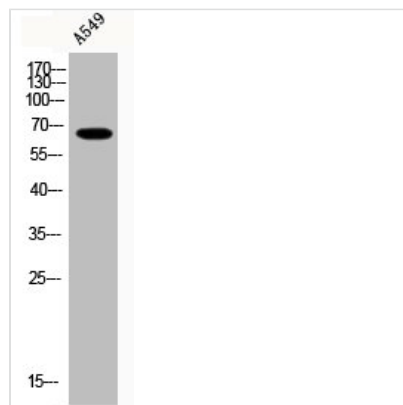




Acetyl-NFE2L2 (K599) Antibody

| | |
|----------------------------|--|
| Product Code | CSB-PA000152 |
| Storage | Upon receipt, store at -20°C or -80°C. Avoid repeated freeze. |
| Uniprot No. | Q16236 |
| Immunogen | Synthesized peptide derived from the C-terminal region of Human Nrf2 around the acetylation site of K599. |
| Raised In | Rabbit |
| Species Reactivity | Human,Mouse,Rat |
| Tested Applications | WB, ELISA; WB:1:500-1:2000, ELISA:1:10000 |
| Form | Liquid |
| Conjugate | Non-conjugated |
| Storage Buffer | Liquid in PBS containing 50% glycerol, 0.5% BSA and 0.02% sodium azide. |
| Purification Method | The antibody was affinity-purified from rabbit antiserum by affinity-chromatography using epitope-specific immunogen. |
| Isotype | IgG |
| Alias | NFE2L2; NRF2; Nuclear factor erythroid 2-related factor 2; NF-E2-related factor 2; NFE2-related factor 2; HEBP1; Nuclear factor, erythroid derived 2, like 2 |
| Immunogen Species | Homo sapiens (Human) |
| Target Names | NFE2L2 |

Image



Western Blot analysis of A549 cells using Acetyl-Nrf2 (K599) Polyclonal Antibody