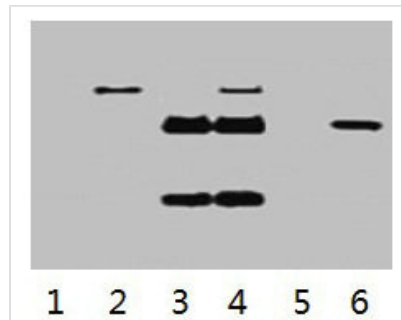




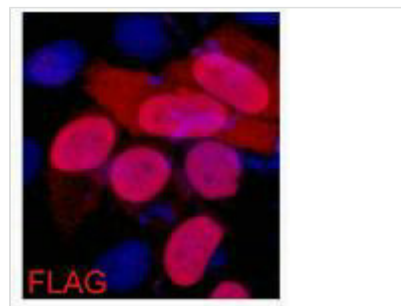
# Flag-Tag Monoclonal Antibody

<b>Product Code</b>	CSB-MA000156
<b>Storage</b>	Upon receipt, store at -20°C or -80°C. Avoid repeated freeze.
<b>Immunogen</b>	Synthetic Peptide
<b>Raised In</b>	Mouse
<b>Species Reactivity</b>	N/A
<b>Tested Applications</b>	ELISA, WB, IF, IP; Recommended dilution: WB:1:500-1:5000, IF:1:50-1:200, IP:1:200-1:2000
<b>Form</b>	Liquid
<b>Conjugate</b>	Non-conjugated
<b>Storage Buffer</b>	PBS, pH 7.4, containing 0.02% sodium azide as Preservative and 50% Glycerol.
<b>Isotype</b>	IgG
<b>Product Type</b>	Monoclonal Antibody
<b>Target Names</b>	Flag-Tag

## Image



IP antibody use: 5µg Flag Mouse IgG1 per ml Lysate, WB 1:5000  
 Lane 1: untransfected 293 cell lysate  
 Lane 2: transfected 293 cell lysate with Flag-tag fusion protein  
 Lane 3: IP (transfected 293 + normal Mouse IgG + Protein G agarose)  
 Lane 4: IP (transfected 293 + anti-Flag mAb + Protein G agarose)  
 Lane 5: IP (transfected 293 + Protein G)  
 Lane 6: Recombinant protein (E.coli)



IF analysis of 293 cells transfected with a Flag-tag protein, 1:2000 dilution (blue DAPI, red anti-Flag)



1  $\mu$ g Flag fusion protein + Primary antibody  
dilution at 1:10000